

Bike Trails in Bucks County

Glen Maxson

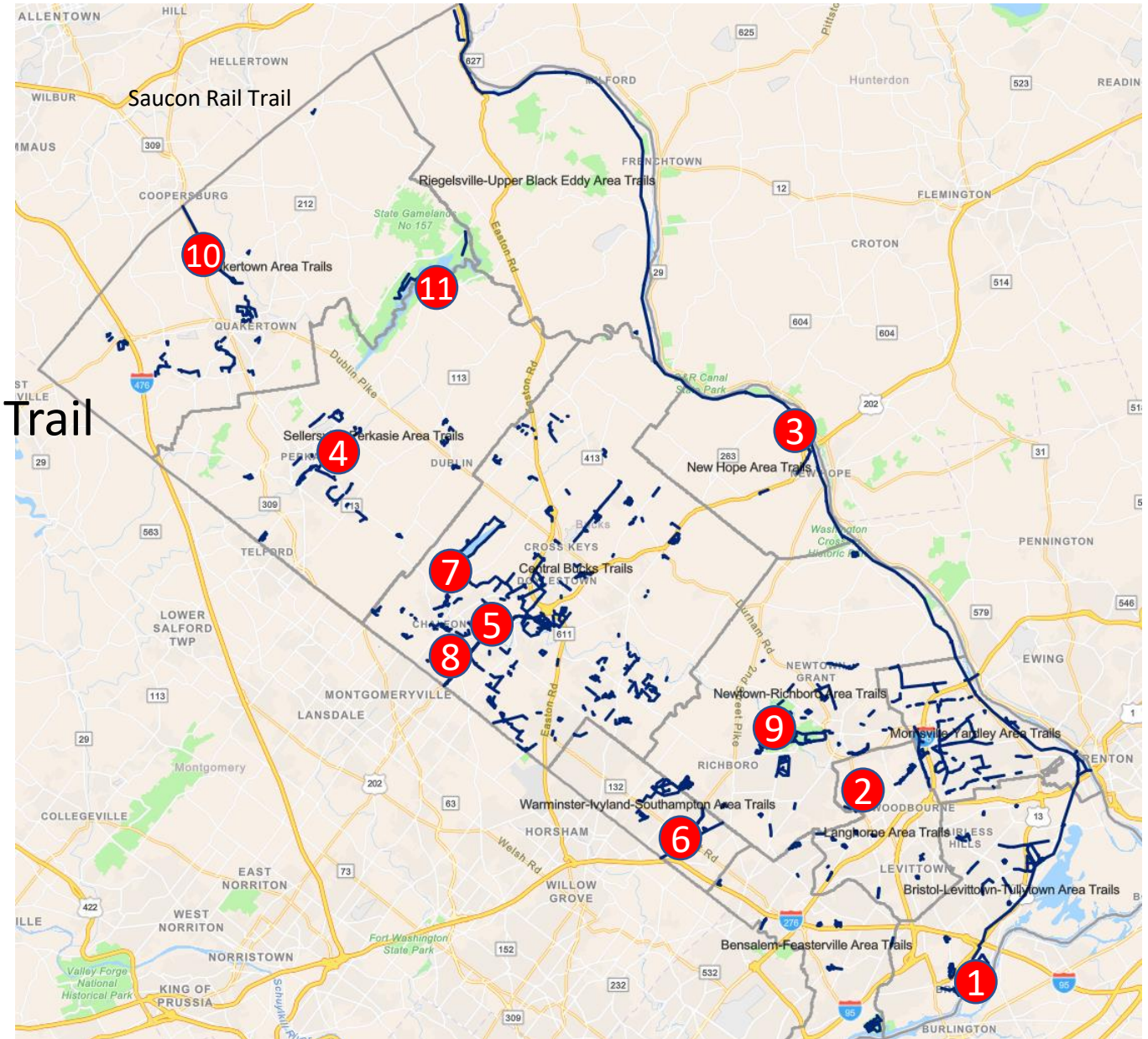
Center for Learning in Retirement

Delaware Valley University

February 26, 2024

Bucks County Trails

- 1 Bristol Spurline Trail
- 2 Core Creek Park Trail
- 3 Delaware & Lehigh Canal Towpath Trail
- 4 East Branch Perkiomen Creek Trail
- 5 Neshaminy Greenway Trail
- 6 Newtown Rail Trail
- 7 Peace Valley Park Trail
- 8 Route 202 Parkway Trail
- 9 Tyler State Park Bike Trails
- 10 Upper Bucks Rail Trail
- 11 Nockamixon State Park

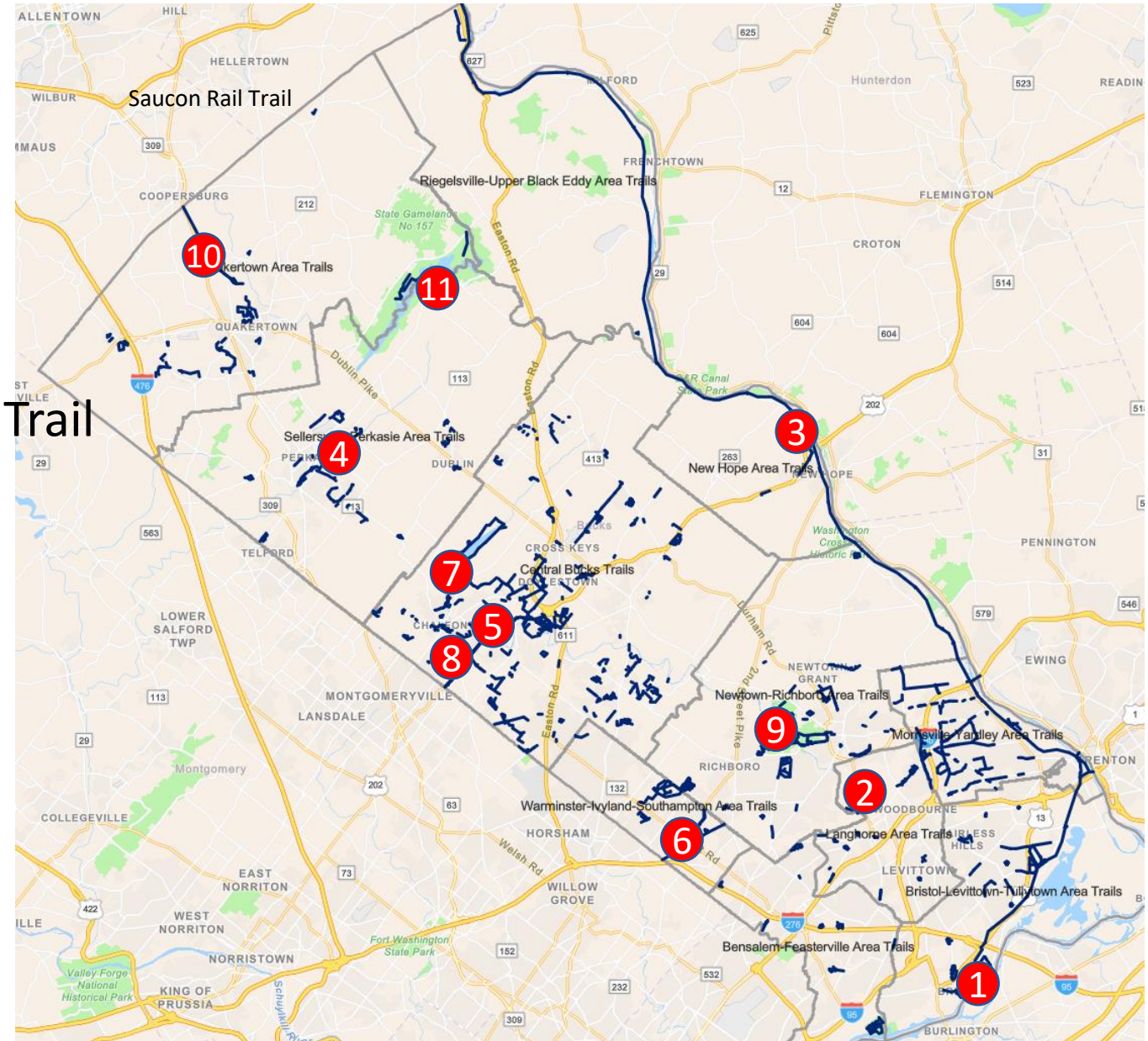


Bucks County Bike Trails - Web Site Links

TRAIL	WEB SITE LINK
Bristol Spurline Trail	https://www.alltrails.com/trail/us/pennsylvania/bristol-spurline-trail
Core Creek Park Trail	https://www.alltrails.com/trail/us/pennsylvania/core-creek-park-trail
Delaware & Lehigh Canal Towpath Trail	https://delawareandlehigh.org/explore-the-corridor/plan-your-trip/trail-maps/
East Branch Perkiomen Creek Trail	https://circuittrails.org/find-trails/east-branch-perkiomen-trail/
Neshaminy Greenway Trail	https://www.alltrails.com/trail/us/pennsylvania/neshaminy-greenway-trail--2
Newtown Rail Trail	https://www.newtownrailtrail.org/
Peace Valley Park Trail	https://trails.dcnr.pa.gov/trails/trail/trailview?trailkey=361
Route 202 Parkway Trail	https://trails.dcnr.pa.gov/trails/trail/trailview?trailkey=506
Tyler State Park Trails	https://www.dcnr.pa.gov/StateParks/FindAPark/TylerStatePark/Pages/Biking.aspx
Upper Bucks Rail Trail	https://www.alltrails.com/trail/us/pennsylvania/upper-bucks-rail-trail--4
Nockamixon State Park	https://www.dcnr.pa.gov/StateParks/FindAPark/NockamixonStatePark/Pages/Biking.aspx
+ Ironton Rail Trail - Lehigh County	https://www.irontonrailtrail.org/
Nor-Bath Rail Trail - Northampton	https://www.trailink.com/trail/nor-bath-trail/
Power Line Trail - Montgomery	https://www.trailink.com/trail/power-line-trail-(pa)/
Columbia Trail – New Jersey	https://www.morrisparks.net/index.php/parks/columbia-trail
Tattamy Trail – Northampton	https://www.trailink.com/trail/tatamy-trail/

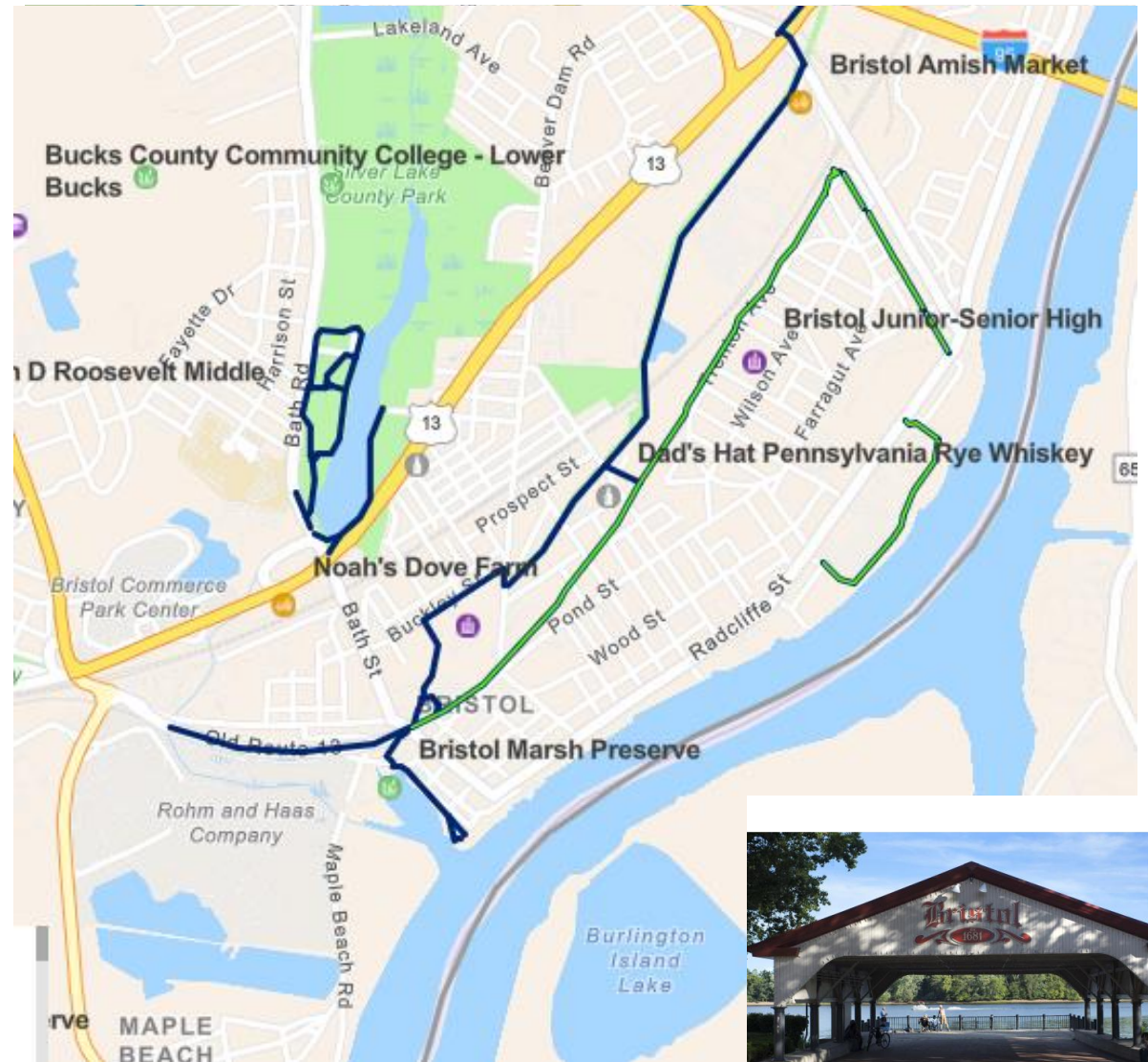
Bucks County Trails

- 1 Bristol Spurline Trail
- 2 Core Creek Park Trail
- 3 Delaware & Lehigh Canal Towpath Trail
- 4 East Branch Perkiomen Creek Trail
- 5 Neshaminy Greenway Trail
- 6 Newtown Rail Trail
- 7 Peace Valley Park Trail
- 8 Route 202 Parkway Trail
- 9 Tyler State Park Bike Trails
- 10 Upper Bucks Rail Trail
- 11 Nockamixon State Park



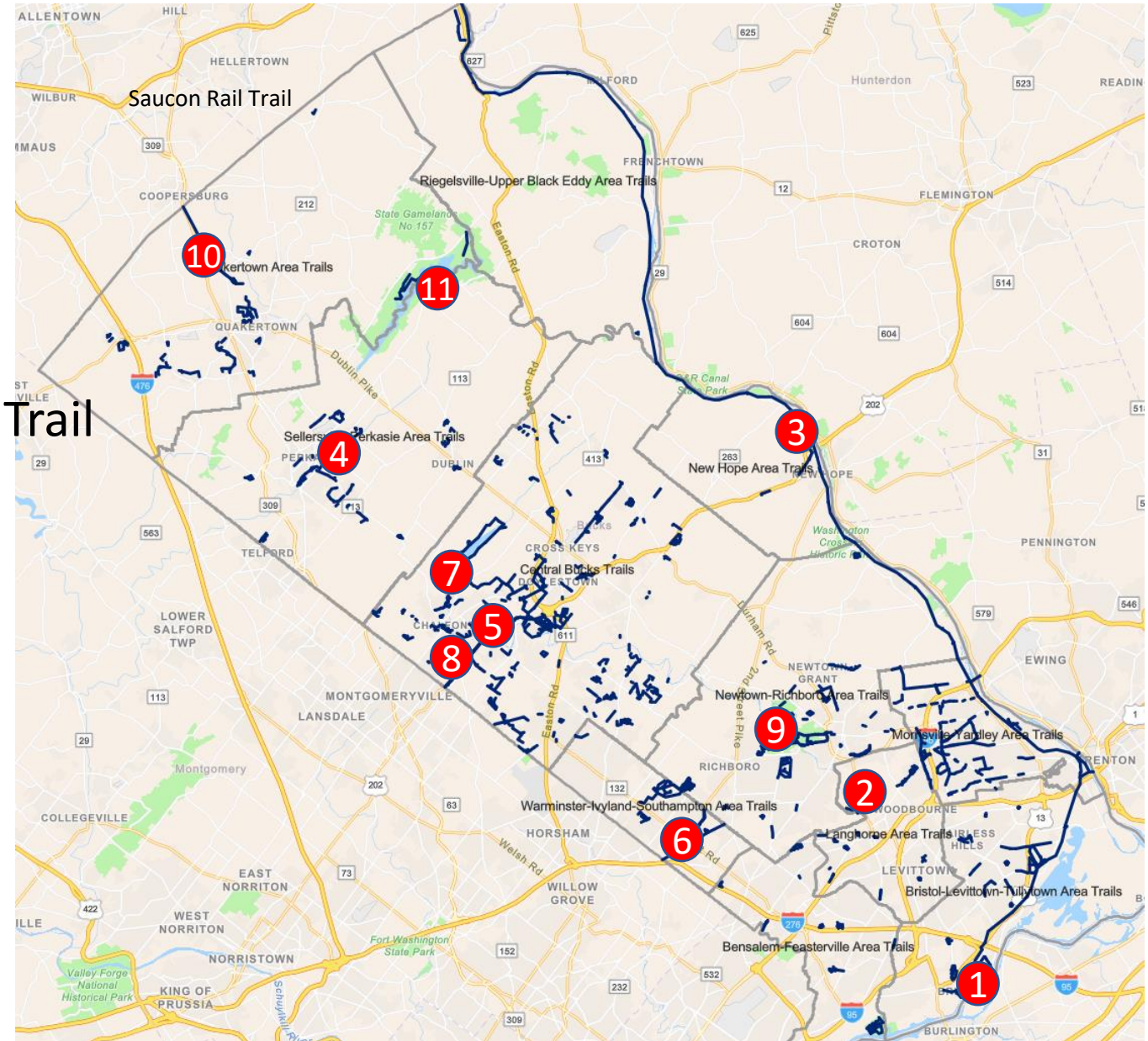
1 Bristol Spurline Trail

- This is a 4.8-mile out-and-back trail near Bristol, Pennsylvania. Generally considered an easy route.
- This is a popular trail for road biking, running, and walking, but you can still enjoy some solitude during quieter times of day.



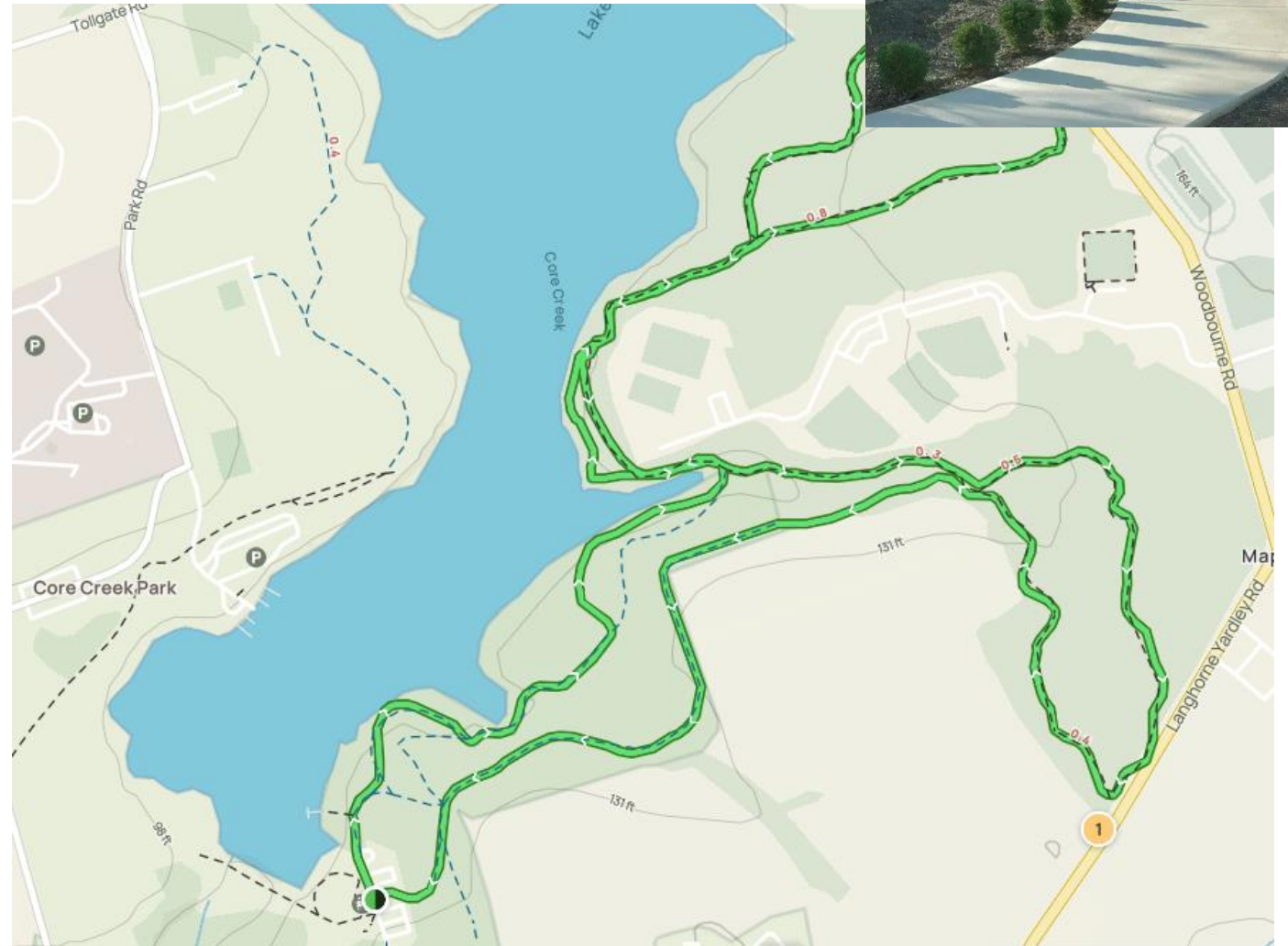
Bucks County Trails

- 1 Bristol Spurline Trail
- 2 Core Creek Park Trail
- 3 Delaware & Lehigh Canal Towpath Trail
- 4 East Branch Perkiomen Creek Trail
- 5 Neshaminy Greenway Trail
- 6 Newtown Rail Trail
- 7 Peace Valley Park Trail
- 8 Route 202 Parkway Trail
- 9 Tyler State Park Bike Trails
- 10 Upper Bucks Rail Trail
- 11 Nockamixon State Park



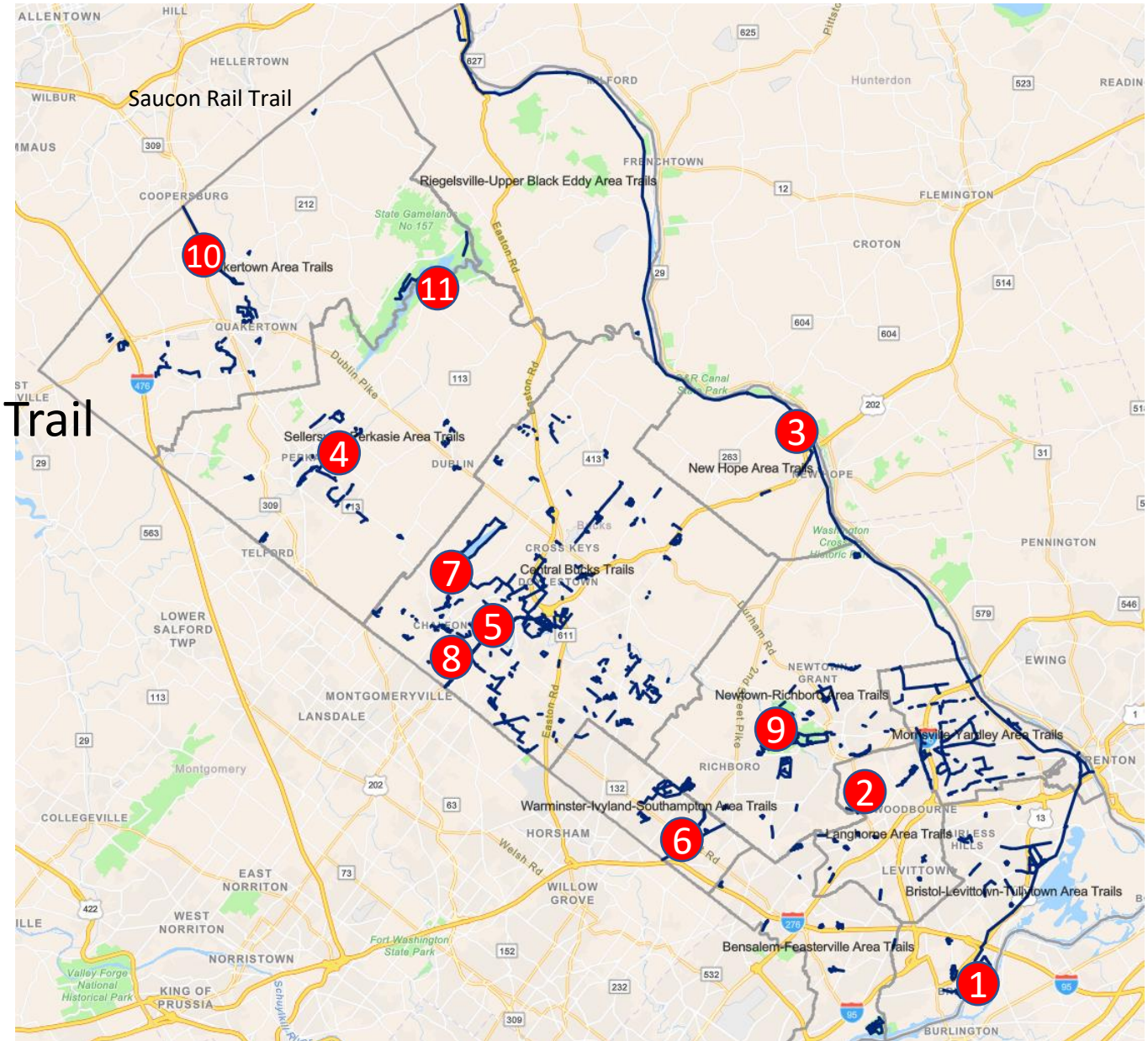
2 Core Creek Park Trail

- This is a 4.4-mile loop trail near Langhorne, Pennsylvania. Generally considered a moderately challenging route.
- This is a very popular area for birding, fishing, and hiking, so you'll likely encounter other people while exploring.
- The best times to visit this trail are March through October.



Bucks County Trails

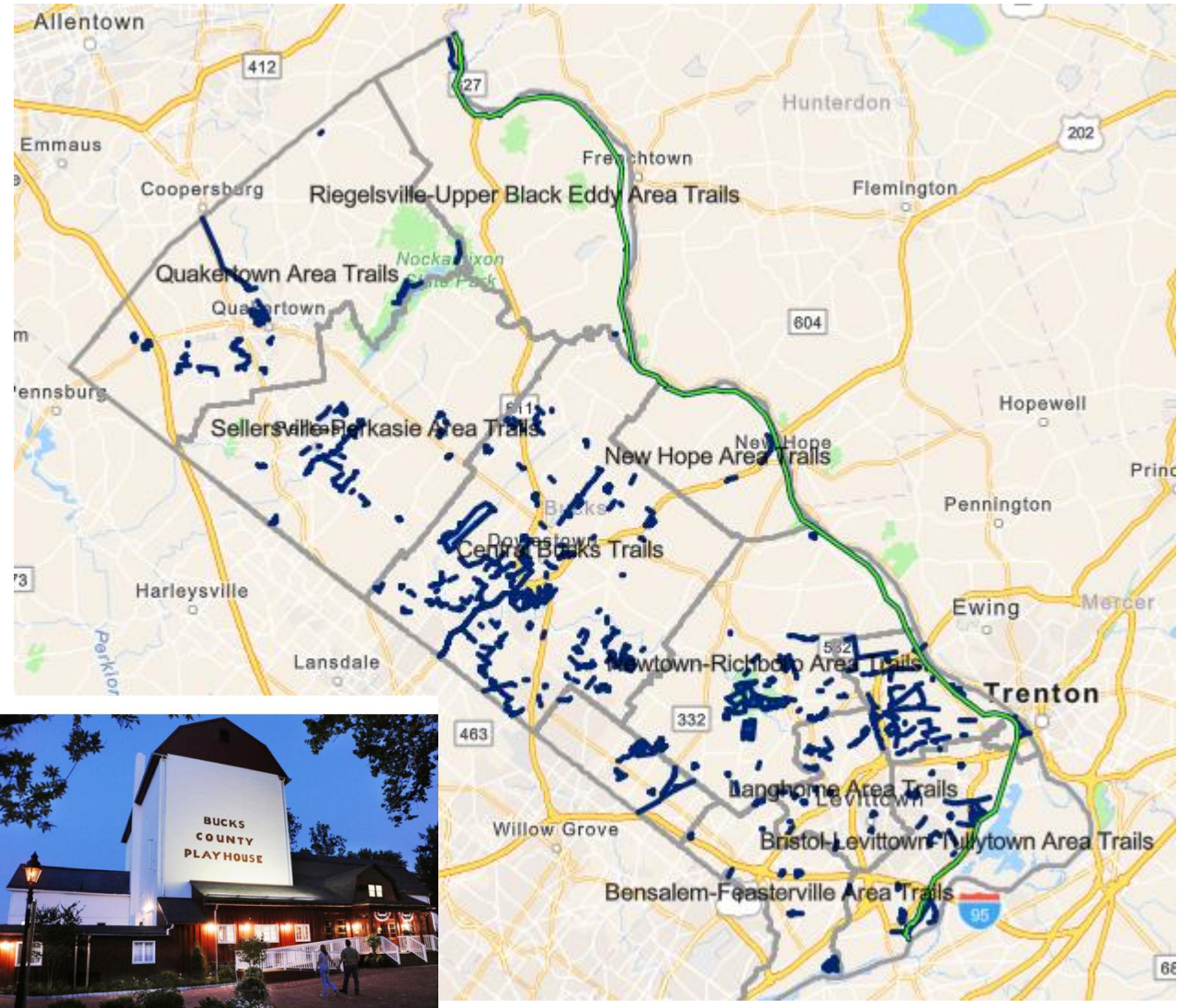
- 1 Bristol Spurline Trail
- 2 Core Creek Park Trail
- 3 Delaware & Lehigh Canal Towpath Trail
- 4 East Branch Perkiomen Creek Trail
- 5 Neshaminy Greenway Trail
- 6 Newtown Rail Trail
- 7 Peace Valley Park Trail
- 8 Route 202 Parkway Trail
- 9 Tyler State Park Bike Trails
- 10 Upper Bucks Rail Trail
- 11 Nockamixon State Park



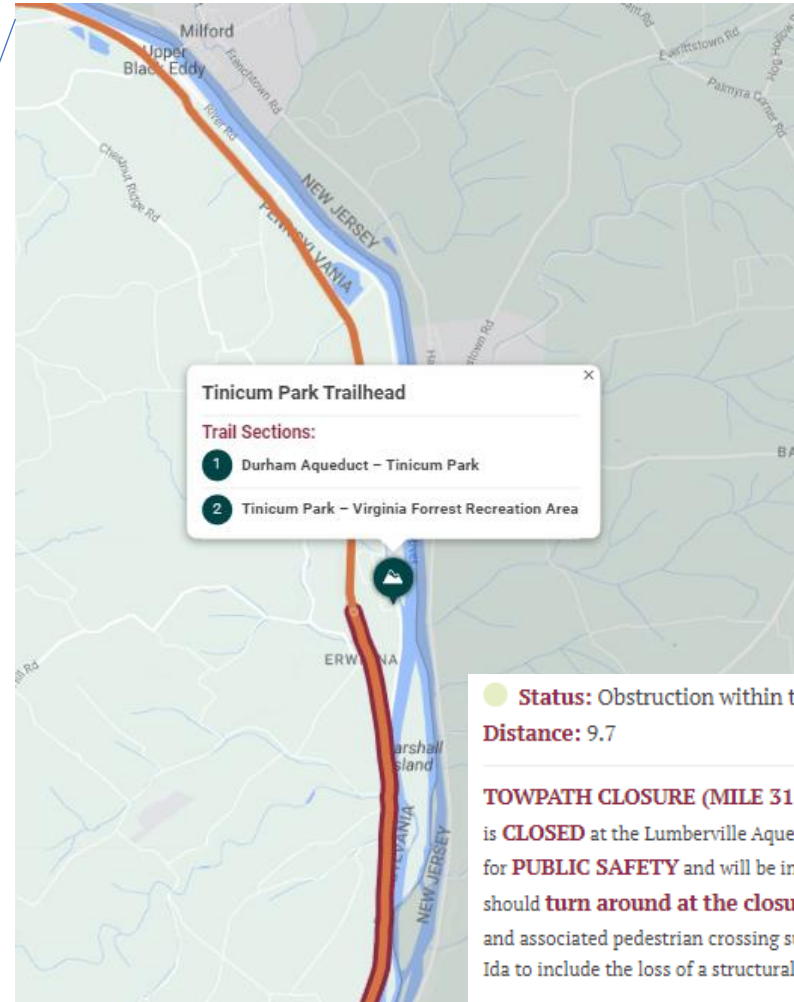
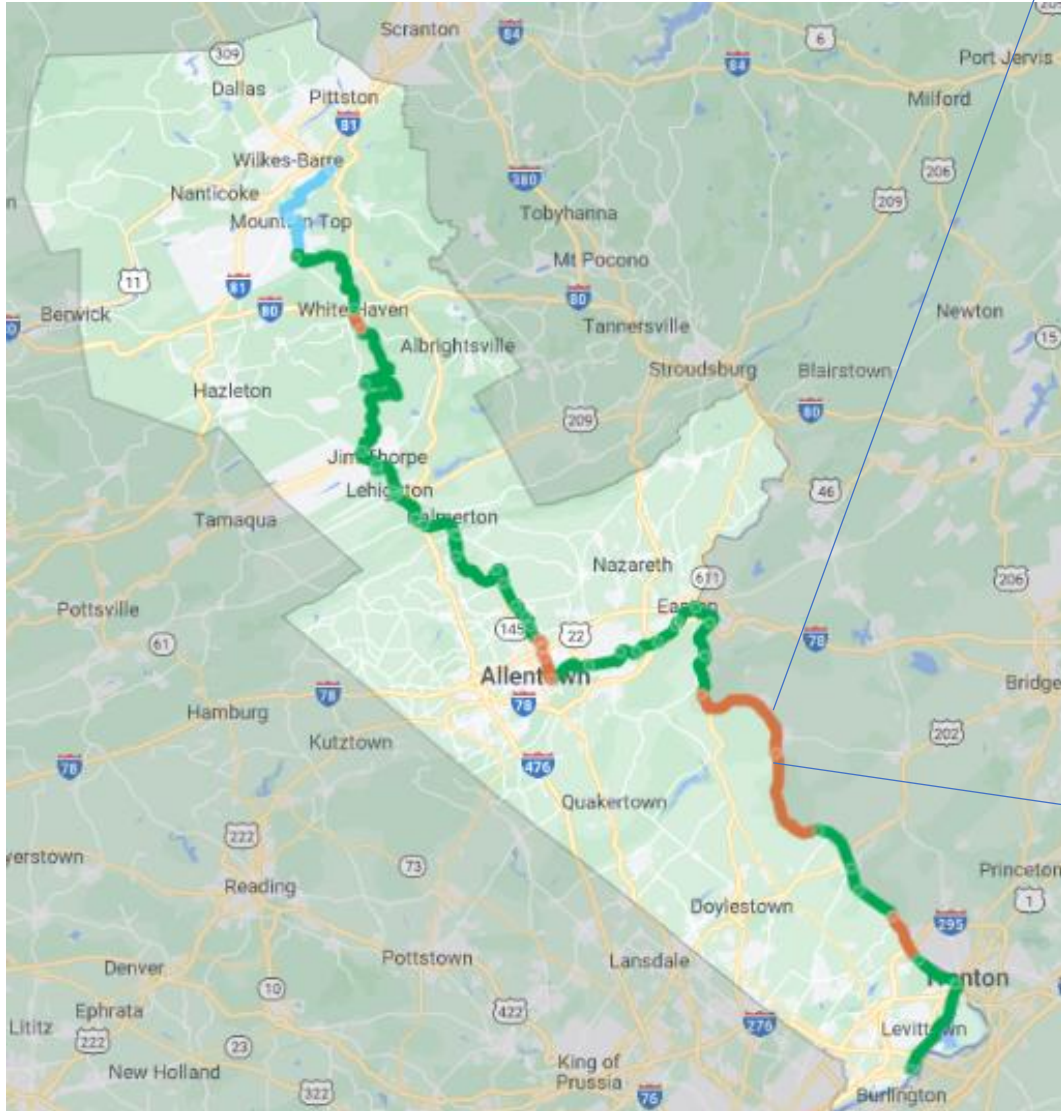
3 Delaware & Lehigh Canal Towpath Trail

- **Trail Type:** Towpath Trail
Trail Surface: Crushed Stone

This historic canal towpath is one of the region's premier shared use trails, and presently is the only dedicated shared use trail that one can use to travel from lower to upper Bucks County. Following the alignment of the old Delaware Canal, this trail starts in Bristol Borough and follows an inland route until reaching Morrisville Borough. Beginning at Morrisville Borough, the trail runs along the Delaware River through to the City of Easton in Northampton County. With over 50 miles of trail this facility has a myriad of attractions and places to visit.



Tinicum Park Trailhead



Status: Obstruction within trail section, see description
Distance: 9.7

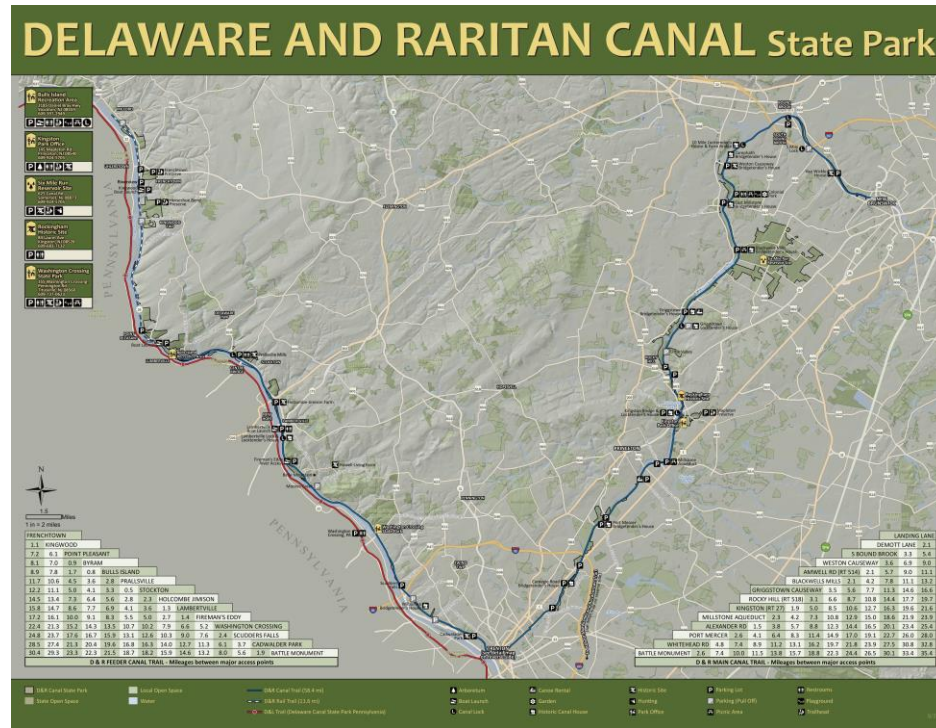
TOWPATH CLOSURE (MILE 31.1). In the area of Lumberville the towpath is **CLOSED** at the Lumberville Aqueduct Pedestrian Bridge. The purpose of this closure is for **PUBLIC SAFETY** and will be in effect until the crossing can be made safe. Trail users should **turn around at the closure and NOT attempt to get by it**. The aqueduct and associated pedestrian crossing sustained significant damages during Tropical Storm Ida to include the loss of a structural pier beneath the aqueduct.

2/17/2023 Update: If you plan to use the Delaware Canal region of the D&L Trail it is highly advised that you use caution between Easton (MP 58.89) and Point Pleasant, Lock 14 (MP32.3) keeping alert for trail damage or debris. Keep alert for heavy equipment canal dredging closures. Heed all signs for road and towpath closures. Check back for status updates.

Delaware and Raritan (D&R) Canal State Park Trails

- Trail Maps

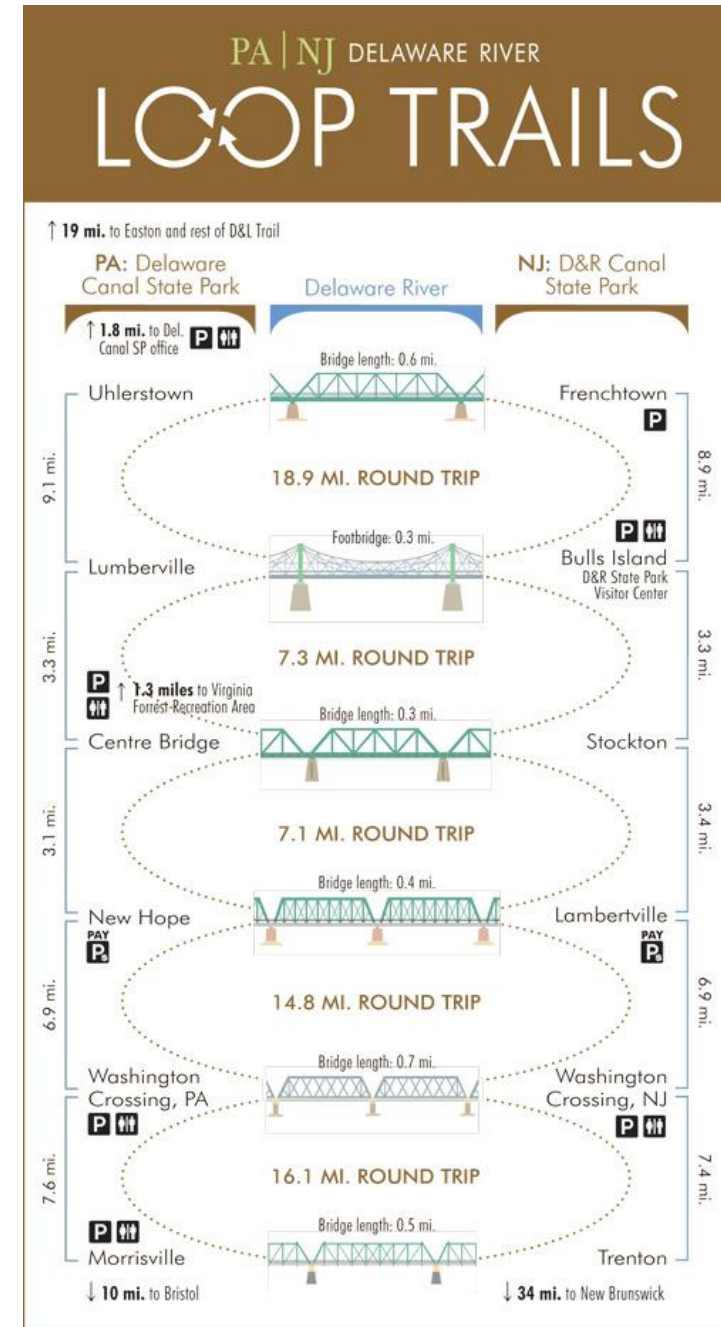
- [D&R Canal State Park Map](#)
- [Abbott Marshlands and Bordentown Bluffs](#)
- [Abbott Marshlands \(Lock 1 – Lock 2\)](#)
- [Bulls Island and Natural Area Loop Trail](#)
- [Delaware Township – Kugler Woods](#)
- [Delaware Township – White Oak Trail](#)
- [Feeder Canal Trail Through Trenton](#)
- [Horseshoe Bend Preserve](#)
- [Kingston/Mapleton Preserve Trails](#)
- [Self-guided “Nursery to Canal” Loop Trail](#)
- [Six Mile Run Trail Map](#)



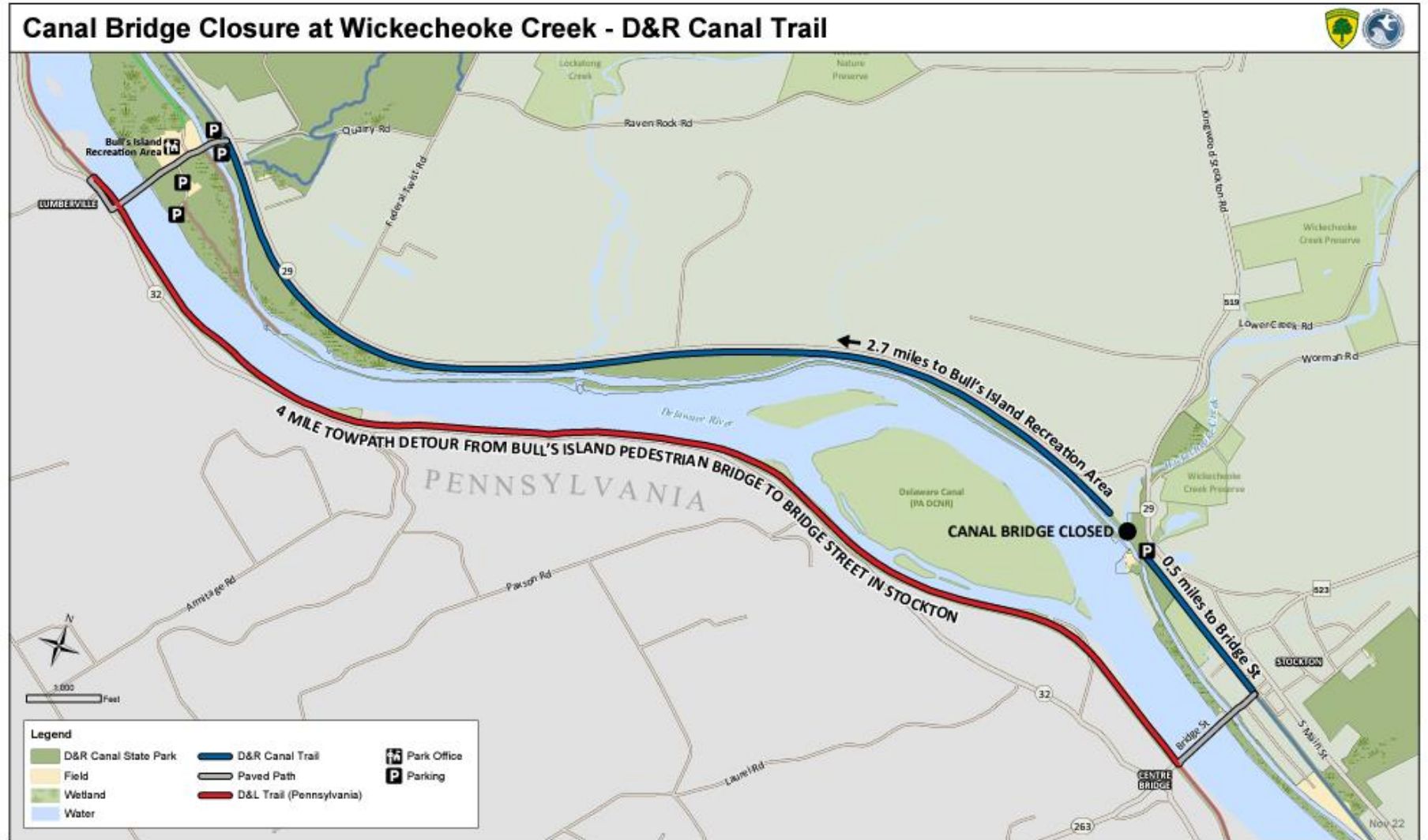
(source)

D&L and D&R Loop Trails

In the Delaware Canal Region, you can combine the [D&L Trail](#) in Pennsylvania with the [Delaware and Raritan Canal State Park](#) in New Jersey using several bridges that cross the Delaware River. This is a great way to explore beautiful loops from 7 to 60 miles around the Delaware River.

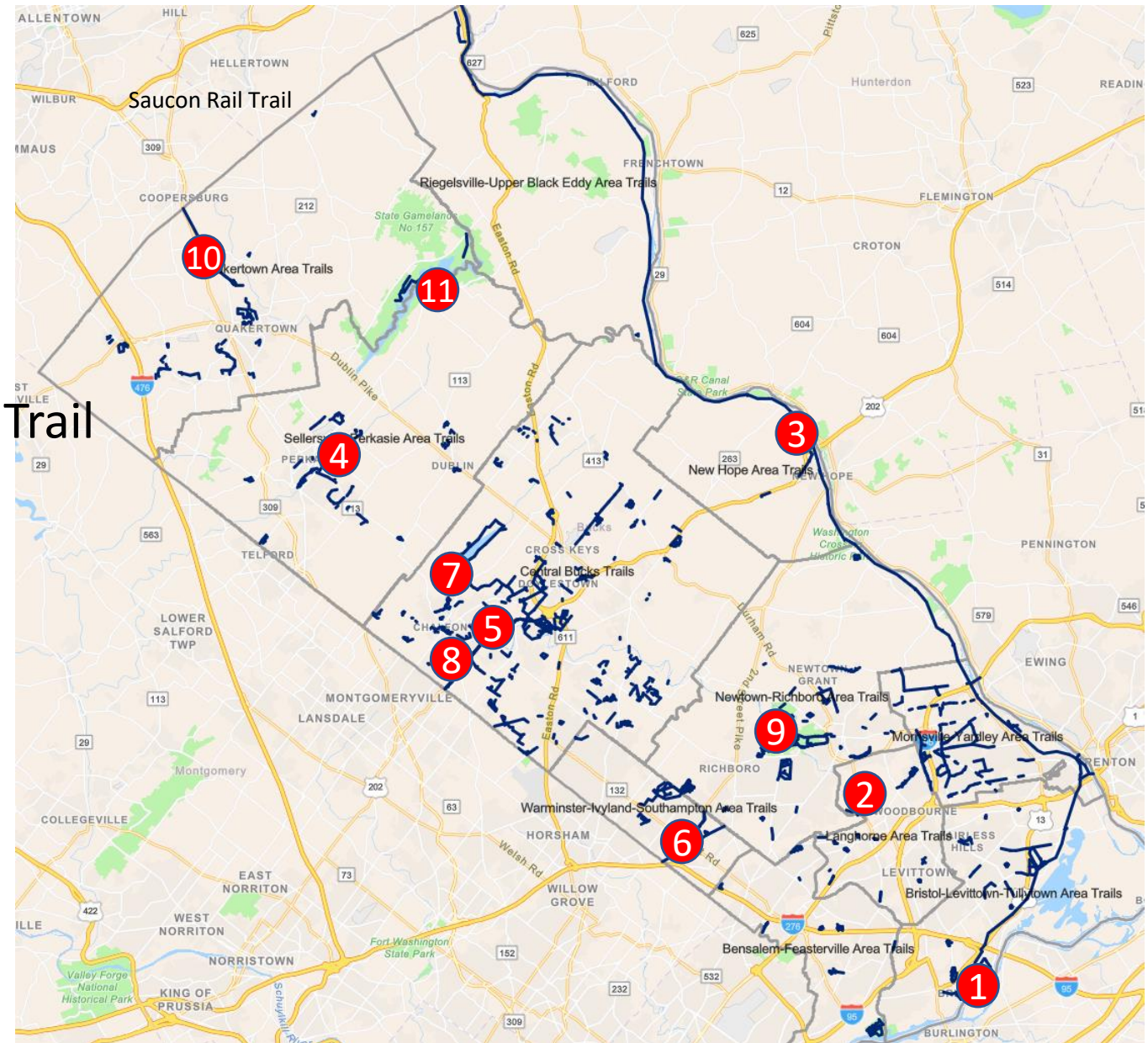


New Jersey State Park Service advisories



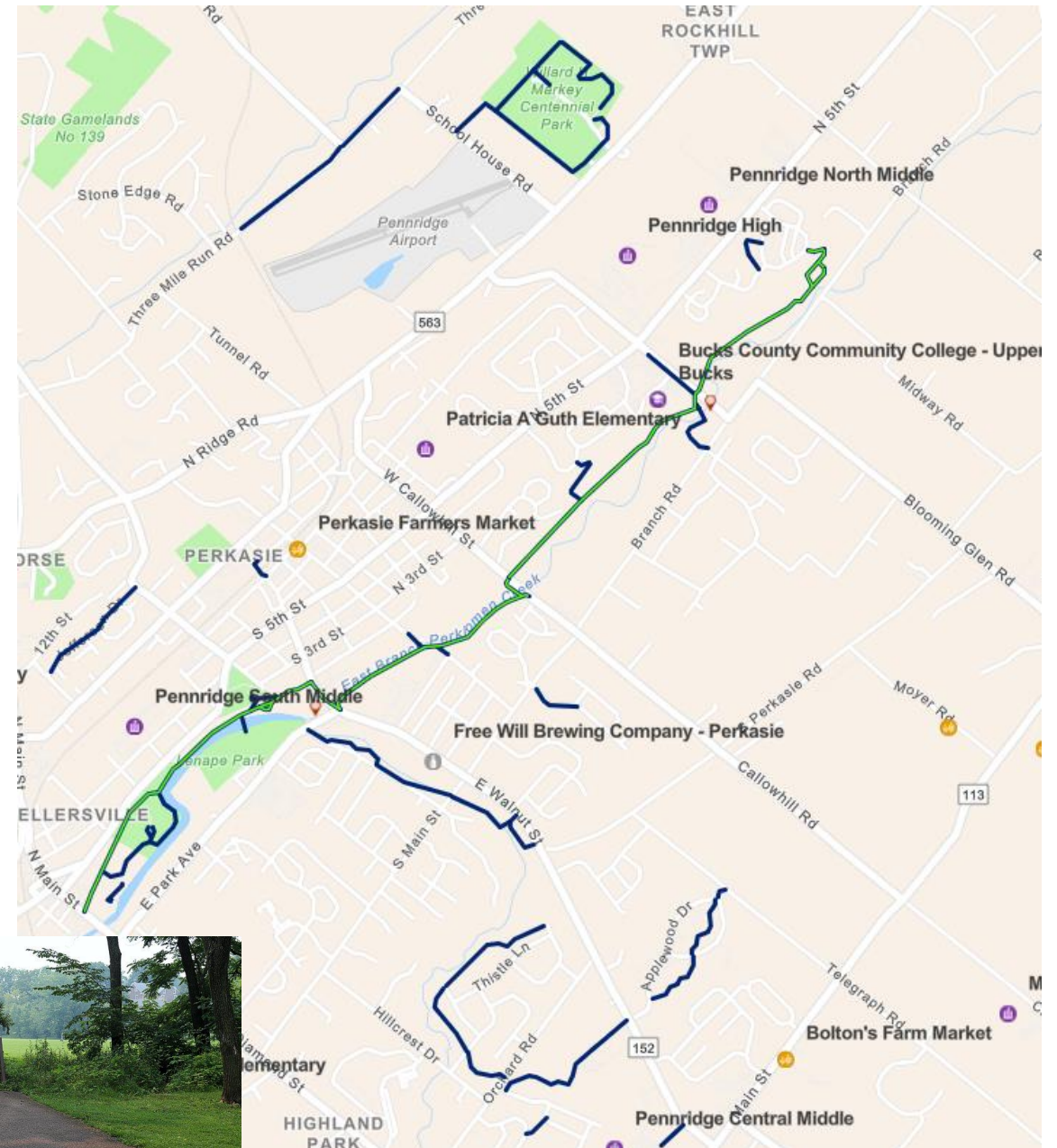
Bucks County Trails

- 1 Bristol Spurline Trail
- 2 Core Creek Park Trail
- 3 Delaware & Lehigh Canal Towpath Trail
- 4 East Branch Perkiomen Creek Trail
- 5 Neshaminy Greenway Trail
- 6 Newtown Rail Trail
- 7 Peace Valley Park Trail
- 8 Route 202 Parkway Trail
- 9 Tyler State Park Bike Trails
- 10 Upper Bucks Rail Trail
- 11 Nockamixon State Park



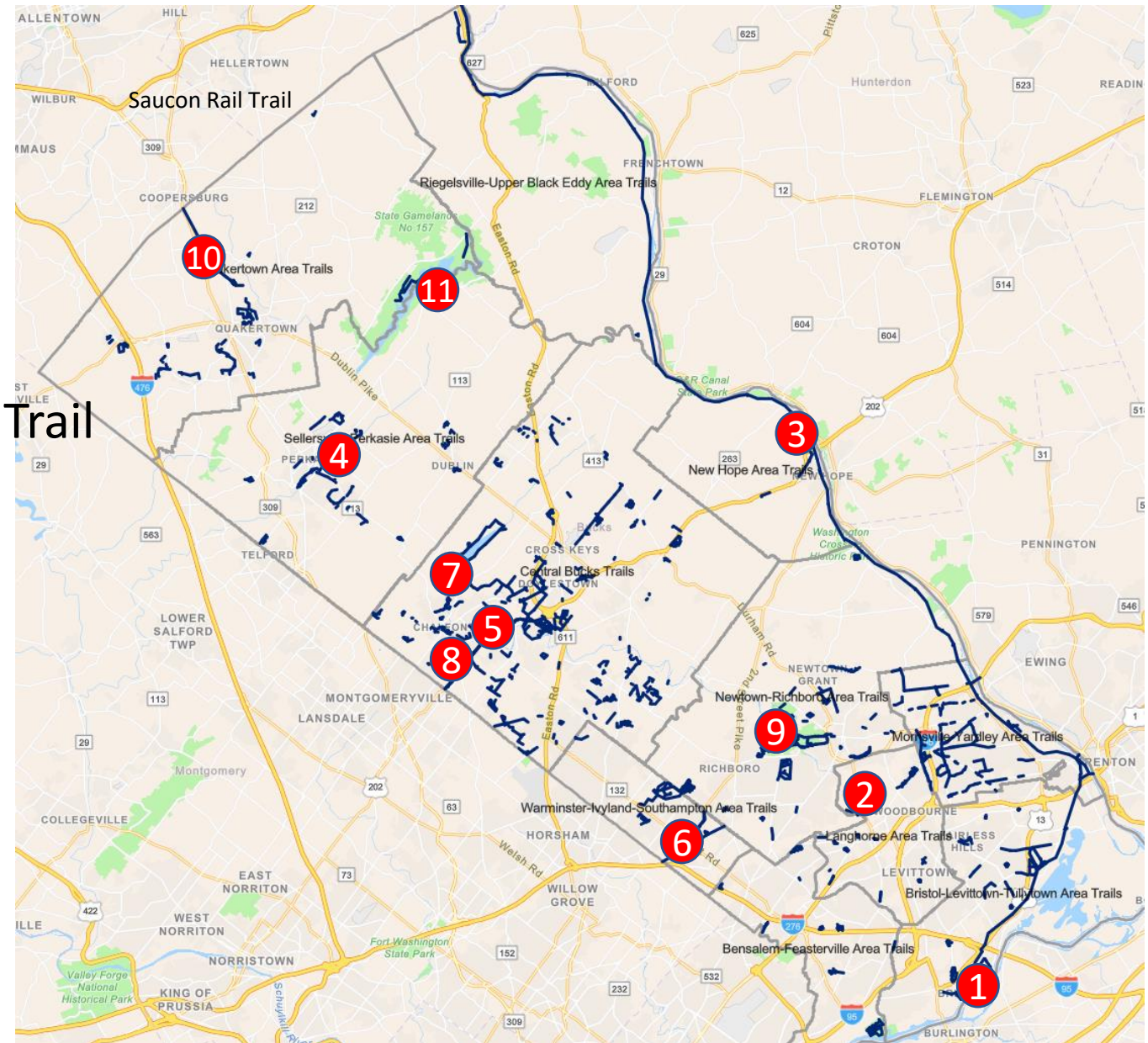
4 East Branch Perkiomen Creek Trail

- The townships of Bedminster, East Rockhill, Hilltown, West Rockhill and the boroughs of Dublin, Perkasio Sellersville, and Silverdale form the Sellersville-Perkasio Trails Area.
- Fifteen miles of trails are dispersed throughout the area including the East Branch Perkiomen Creek Trail, [Pleasant Spring Creek Trail](#), Hilltown Walk to [Al Reese Park Trail](#), [Bedminster Hunt Neighborhood Trail](#), and [Willard H Markey Centennial Park Trail](#).



Bucks County Trails

- 1 Bristol Spurline Trail
- 2 Core Creek Park Trail
- 3 Delaware & Lehigh Canal Towpath Trail
- 4 East Branch Perkiomen Creek Trail
- 5 Neshaminy Greenway Trail
- 6 Newtown Rail Trail
- 7 Peace Valley Park Trail
- 8 Route 202 Parkway Trail
- 9 Tyler State Park Bike Trails
- 10 Upper Bucks Rail Trail
- 11 Nockamixon State Park

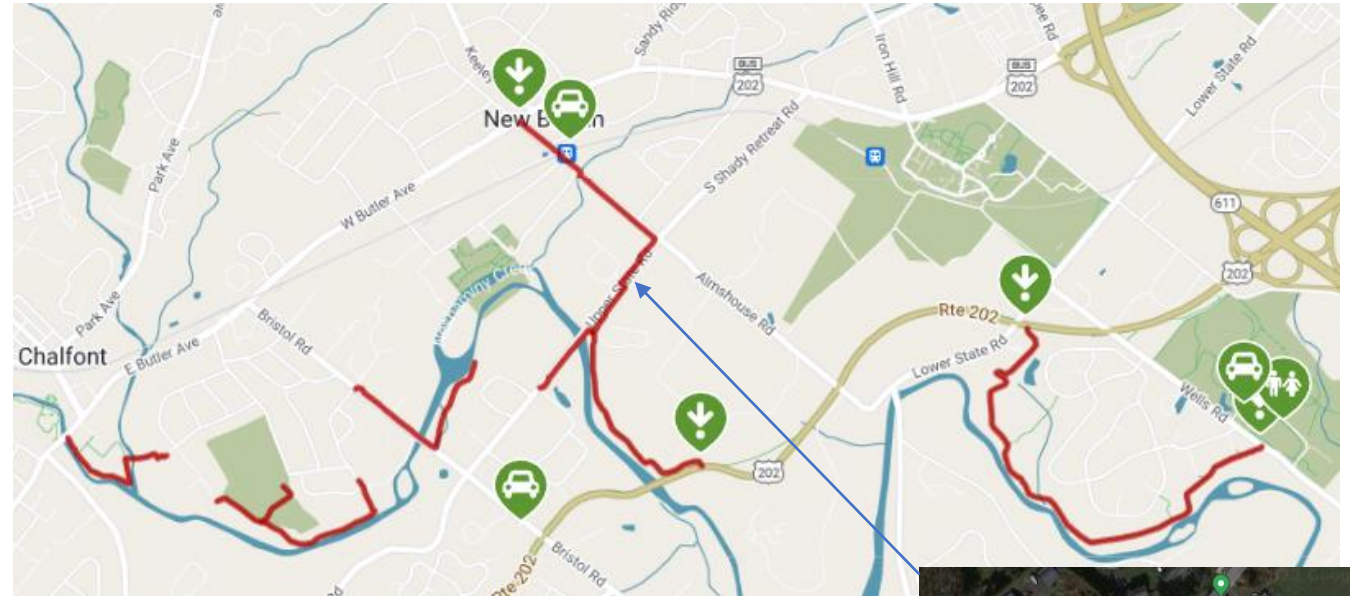


5 Neshaminy Greenway Trail

- **Trail Type:** Shared Use Trail
Trail Surface: Asphalt

Starting within Chalfont Borough and planned to run along the Neshaminy Creek to its end point at the Delaware River, the Neshaminy Greenway Trail will serve as a primary corridor for trail users in the County when the trail is completed. Presently the trail has completed segments in the communities of Chalfont, Doylestown, New Britain, and Newtown.

Key Attractions: The completed segments include Chalfont Borough, Tyler State Park, Bucks County Community College, Delaware Valley University, and a connection to the Route 202 Parkway Trail.



Neshaminy Greenway Trail
Route 202 Parkway Bike Lane
Neamand Park Trail



When I want to access this trail by car, I would park by the Soccer Field off Upper State Rd.



Neshaminy Greenway Trail II – How Trails are Made

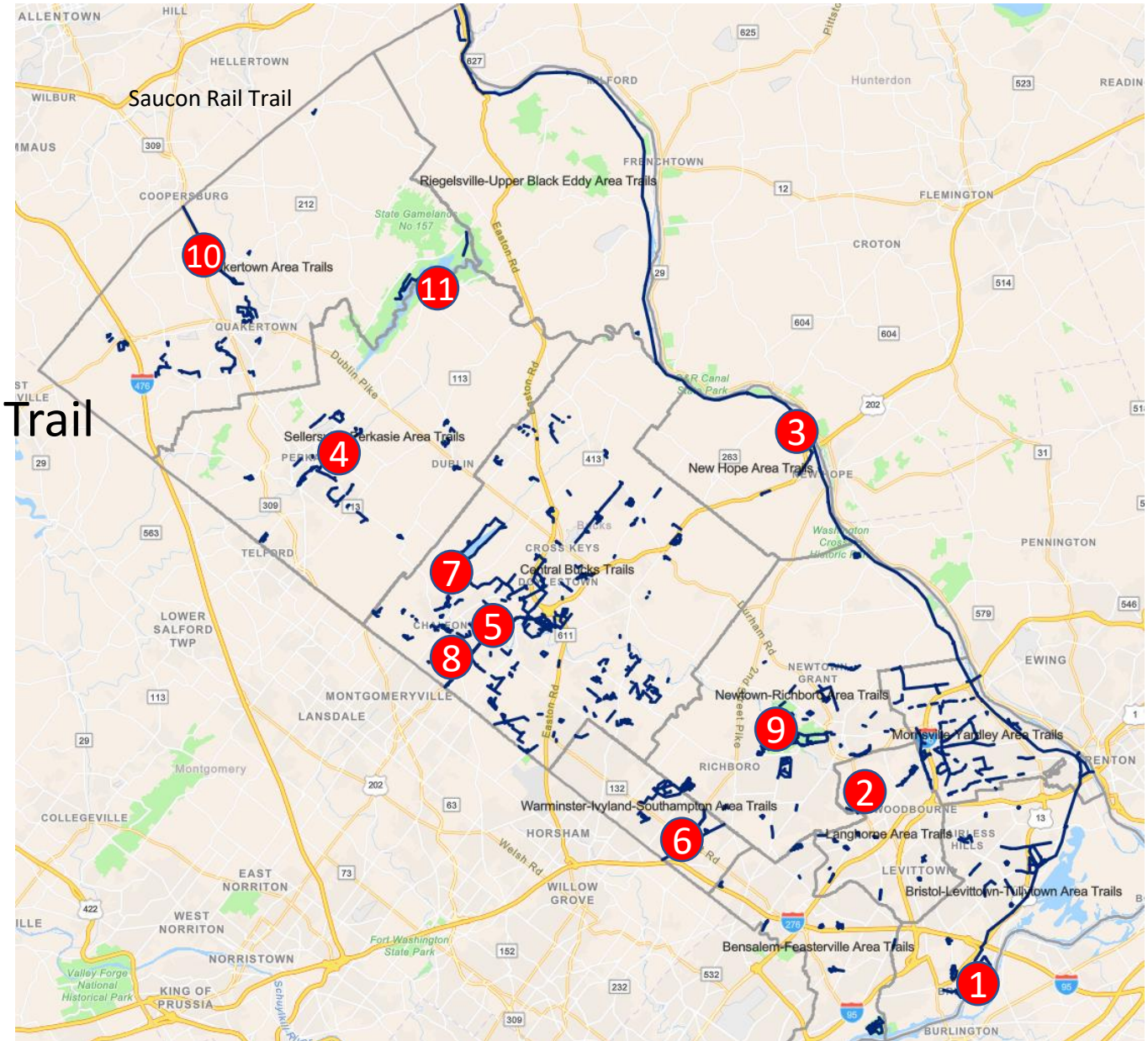


[2022.10.26 Neshaminy Greenway Trail - Dark Hollow Park Project Overview](#)

[2022.05.02 Neshaminy Greenway Trail Dark Hollow Park - CADC Meeting Video](#)

Bucks County Trails

- 1 Bristol Spurline Trail
- 2 Core Creek Park Trail
- 3 Delaware & Lehigh Canal Towpath Trail
- 4 East Branch Perkiomen Creek Trail
- 5 Neshaminy Greenway Trail
- 6 Newtown Rail Trail
- 7 Peace Valley Park Trail
- 8 Route 202 Parkway Trail
- 9 Tyler State Park Bike Trails
- 10 Upper Bucks Rail Trail
- 11 Nockamixon State Park



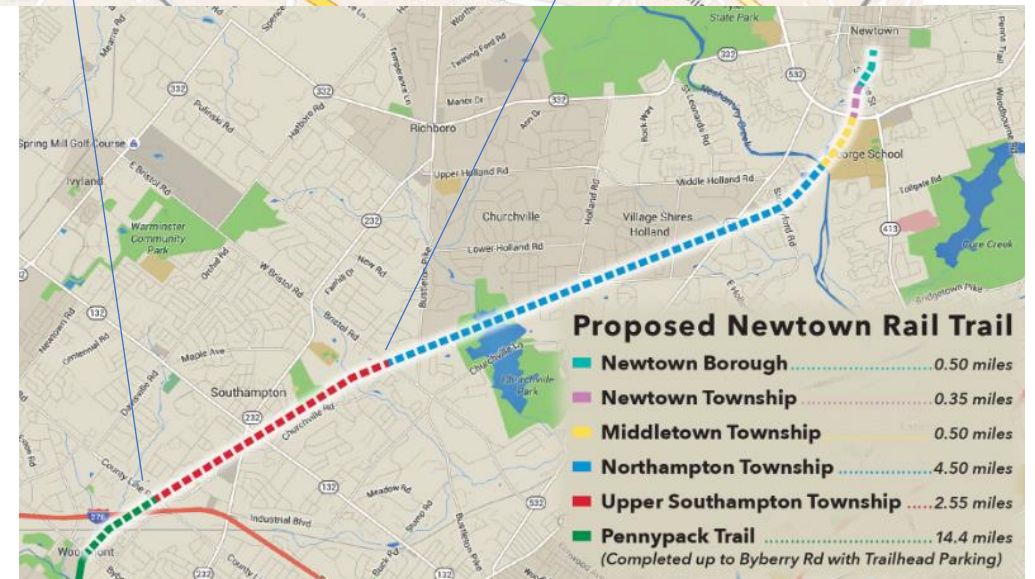
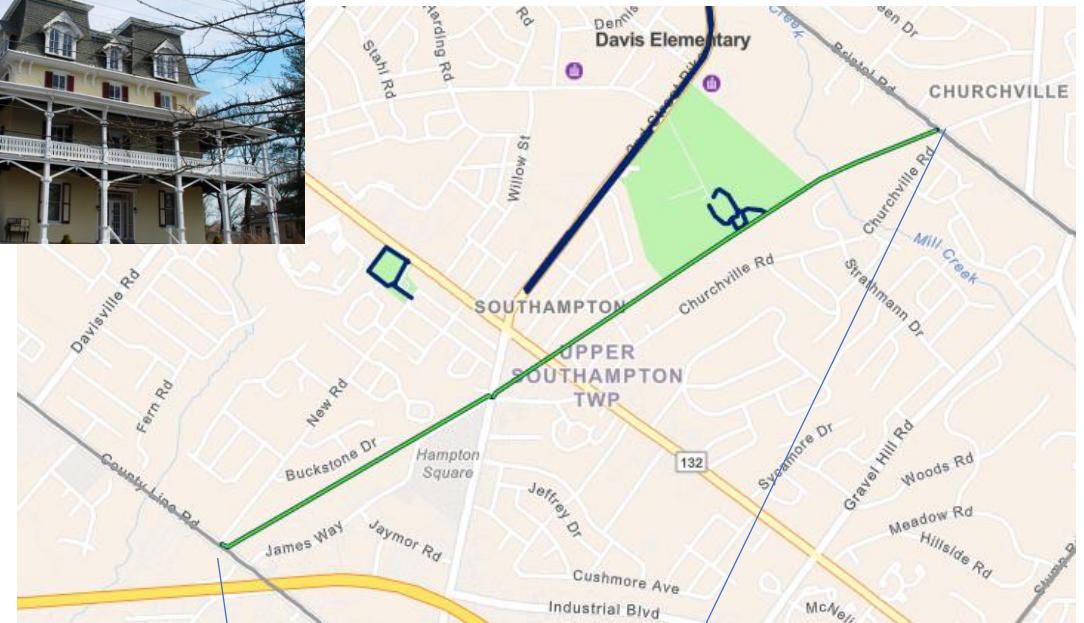
6

Newtown Rail Trail

- **Trail Type:** Rail Trail
Trail Surface: Crushed Stone

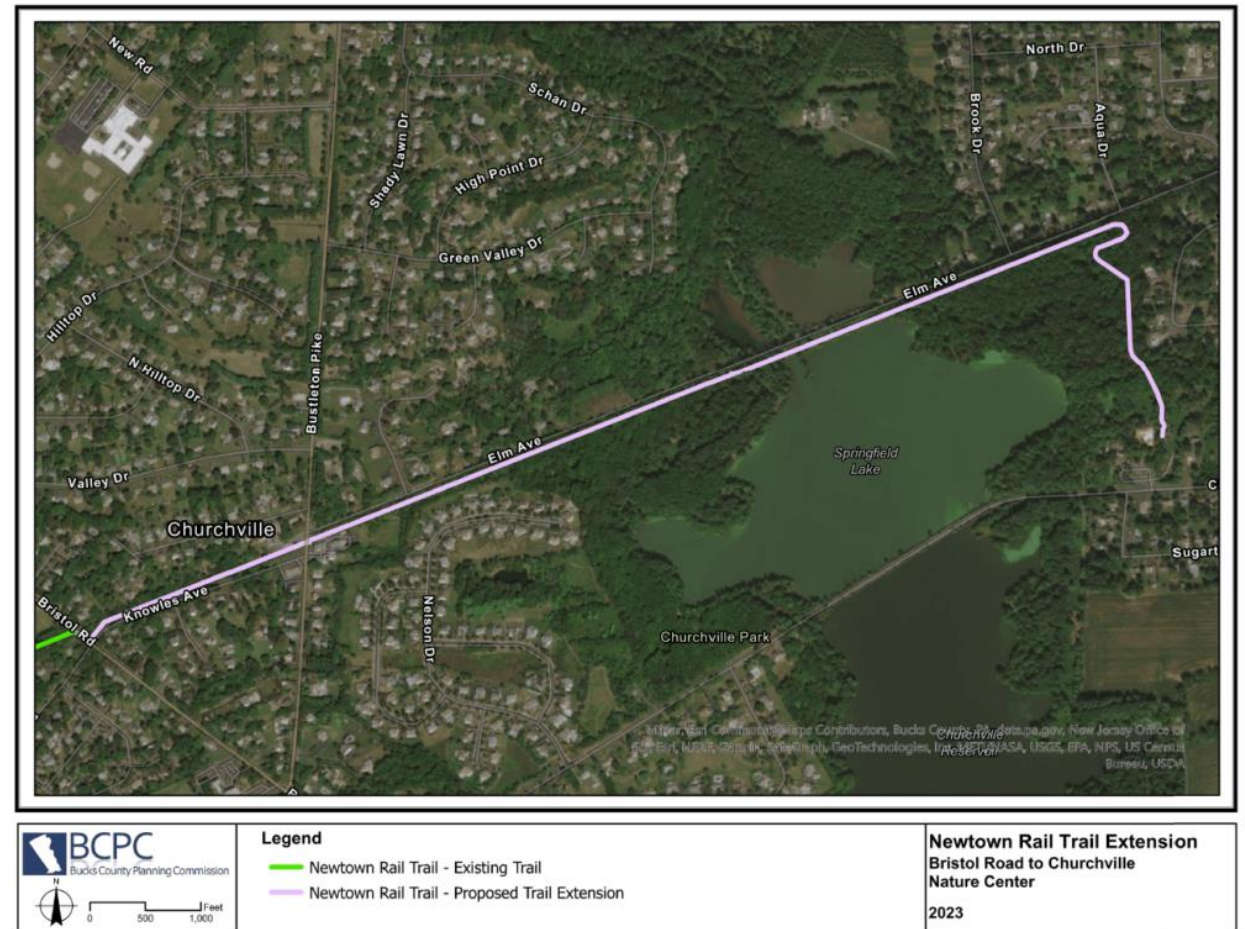
Beginning at Bucks County’s border with Montgomery County, the Newtown Rail Trail connects to Montgomery County’s Pennypack Trail at County Line Road. This trail runs along the alignment of the former Newtown rail line from County Line Road to Bristol Road and provides the community of Southampton with pedestrian connections to the Southampton commercial district and Tamanend Park. The next phase of this trail is currently in the engineering stage and will continue the trail along the former rail line to connect to the County-owned Churchville Nature Center facility.

Key Attractions: The completed segments include Chalfont Borough, Tyler State Park, Bucks County Community College, Delaware Valley University, and a connection to the Route 202 Parkway Trail.



Newtown Rail Trail update

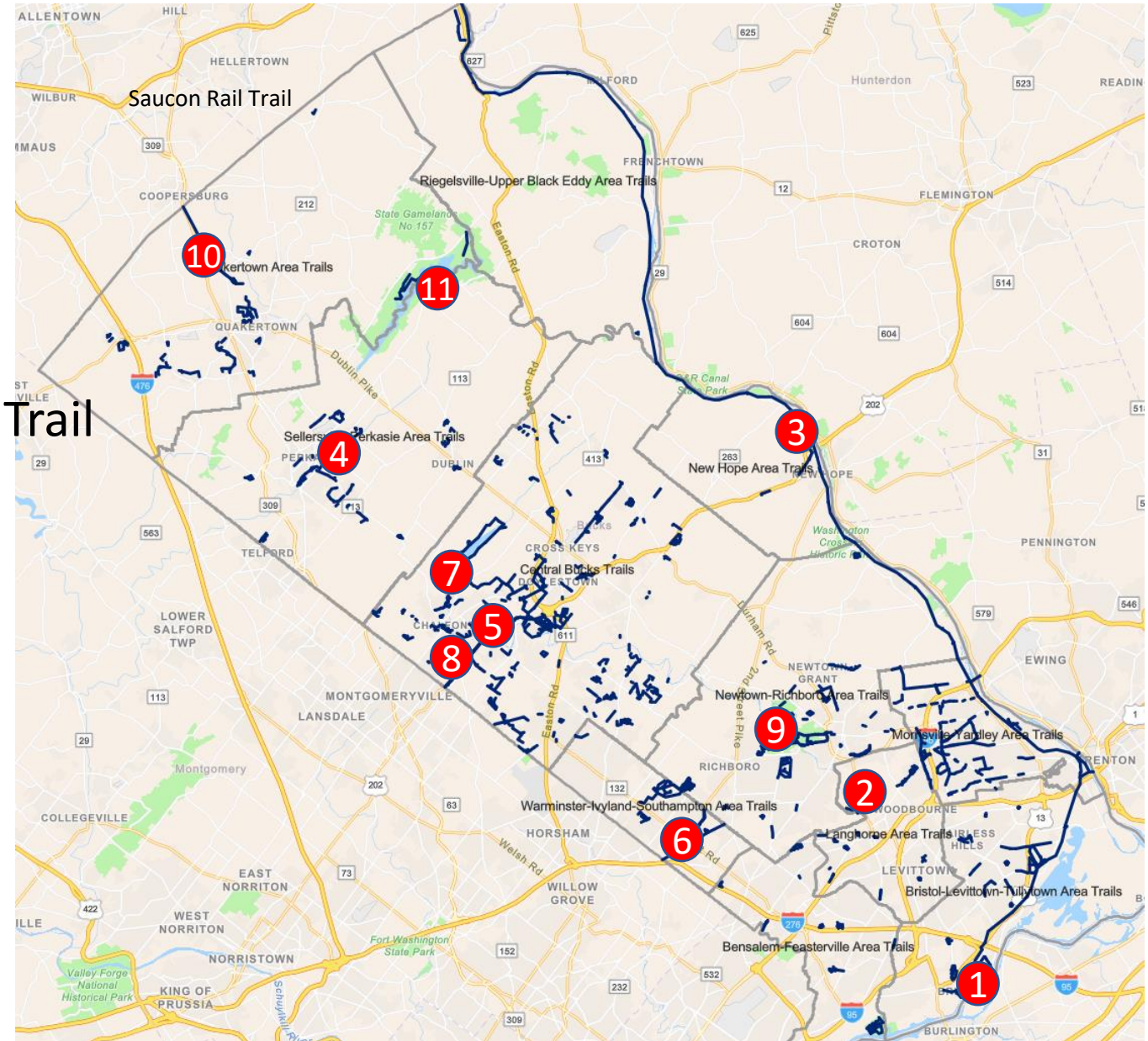
- Progress
 - Newtown Rail Trail Phase 1 – Upper Southampton is now open! 2.55 Miles from Bristol Rd to County Line Rd.
 - Montgomery County’s, Pennypack Extension, 0.83 Miles from County Line Rd to Byberry Road is also complete.
 - You can now ride/walk/run 18.25 Miles from Bristol Rd to the Delaware River in Philadelphia’s Holmesburg neighborhood.
 - Proposed extension - 2023



01-11-2023 - Bucks County Receives \$2.5M in Grants for Newtown Rail Trail

Bucks County Trails

- 1 Bristol Spurline Trail
- 2 Core Creek Park Trail
- 3 Delaware & Lehigh Canal Towpath Trail
- 4 East Branch Perkiomen Creek Trail
- 5 Neshaminy Greenway Trail
- 6 Newtown Rail Trail
- 7 Peace Valley Park Trail
- 8 Route 202 Parkway Trail
- 9 Tyler State Park Bike Trails
- 10 Upper Bucks Rail Trail
- 11 Nockamixon State Park

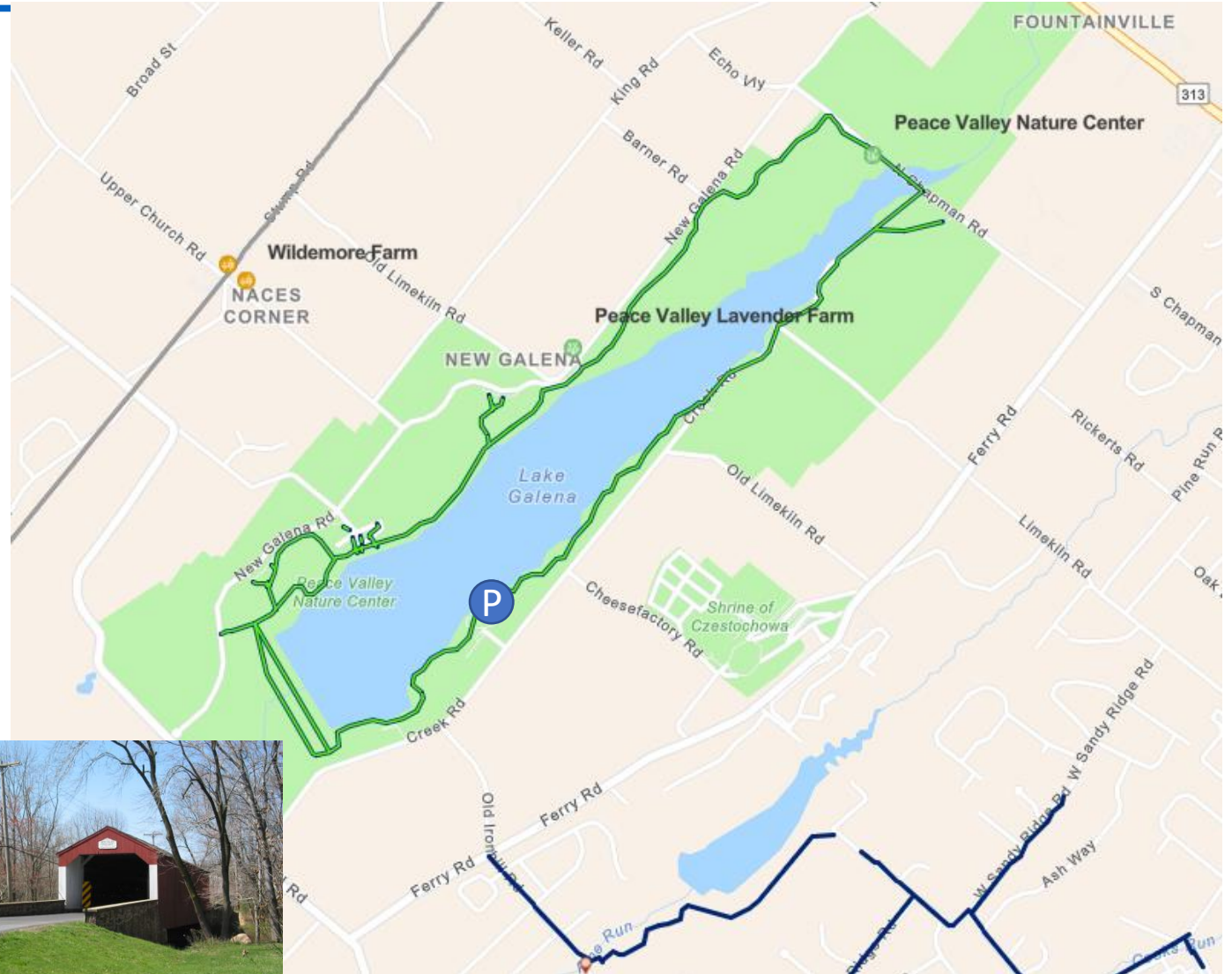


7 Peace Valley Park Trail

- **Trail Type:** Shared Use Trail
Trail Surface: Asphalt

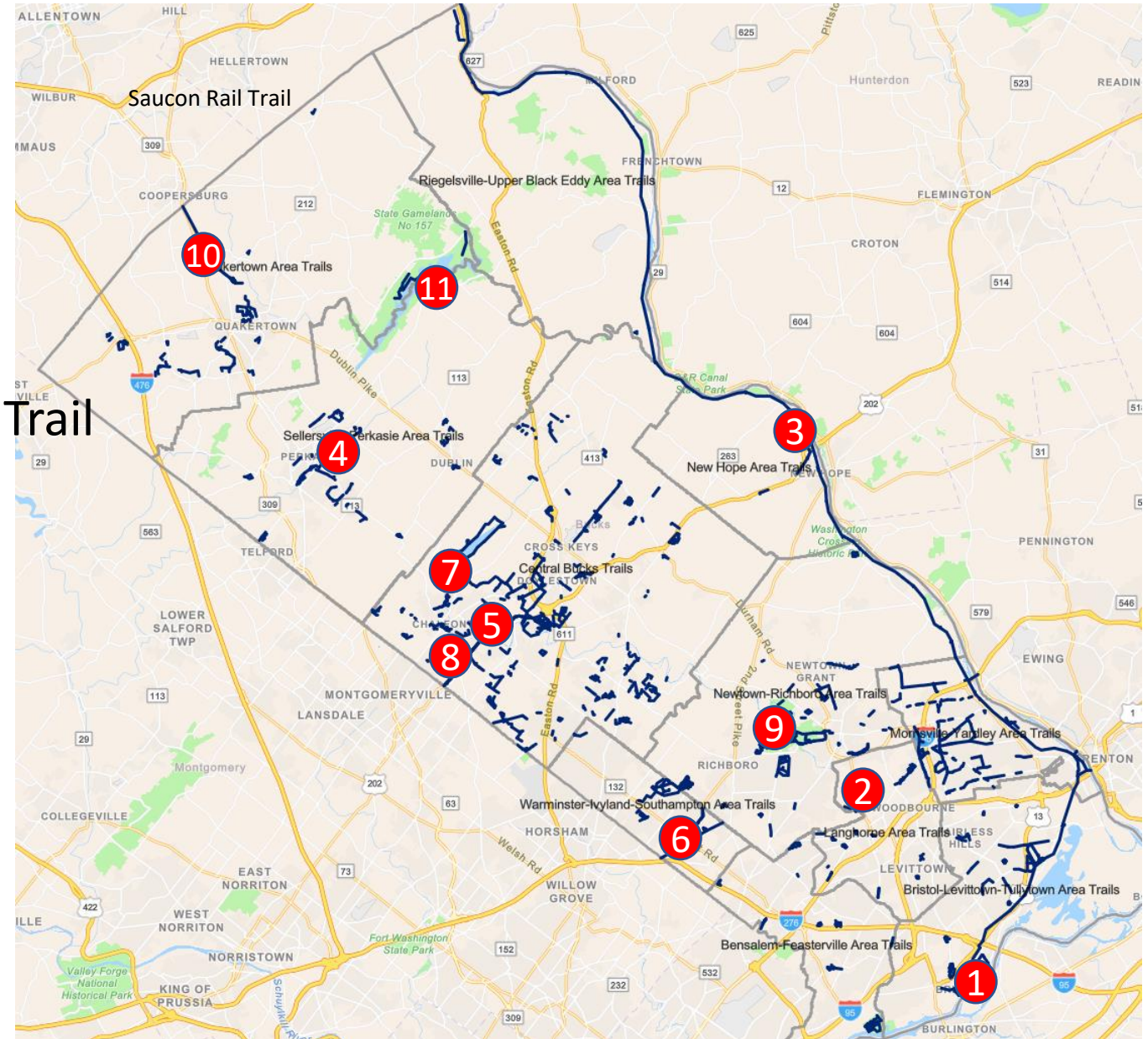
Located within Bucks County's Peace Valley Park, this loop trail surrounds Lake Galena with over seven miles of trail facilities. Notable attractions within Peace Valley Park include picnic amenities at the southern portion of the lake and Peace Valley Nature Center towards its northern end. The primary loop trail is nine feet in width and provides an encompassing view of Lake Galena from its dam. It also provides connections to numerous hiking/nature trails located within Peace Valley Nature Center.

Key Attractions: Peace Valley Lavender Farm, Peace Valley Nature Center, Peace Valley Boat Launch, and Angler's Pavilion.



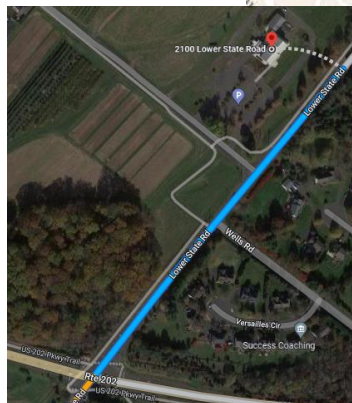
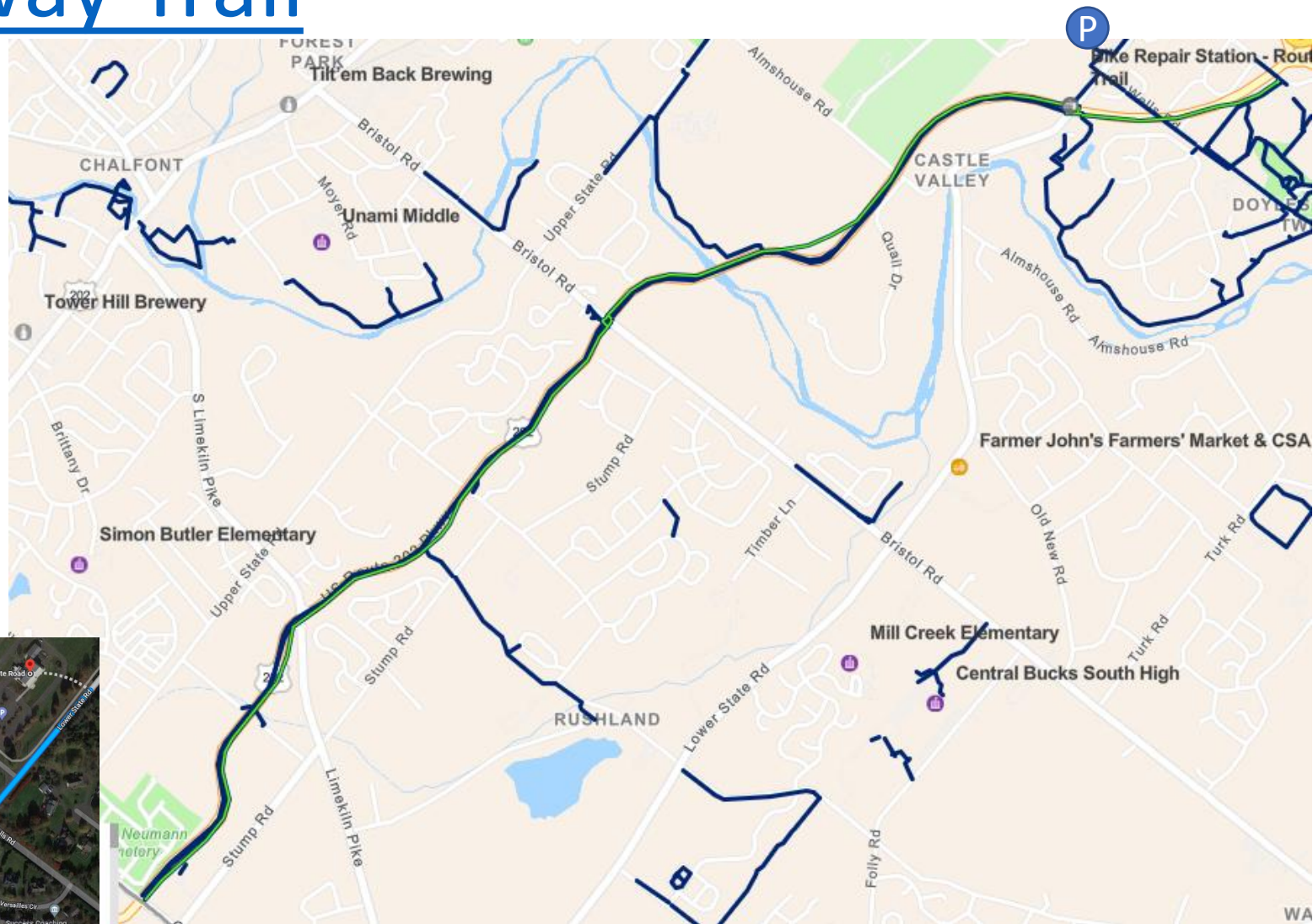
Bucks County Trails

- 1 Bristol Spurline Trail
- 2 Core Creek Park Trail
- 3 Delaware & Lehigh Canal Towpath Trail
- 4 East Branch Perkiomen Creek Trail
- 5 Neshaminy Greenway Trail
- 6 Newtown Rail Trail
- 7 Peace Valley Park Trail
- 8 Route 202 Parkway Trail
- 9 Tyler State Park Bike Trails
- 10 Upper Bucks Rail Trail
- 11 Nockamixon State Park



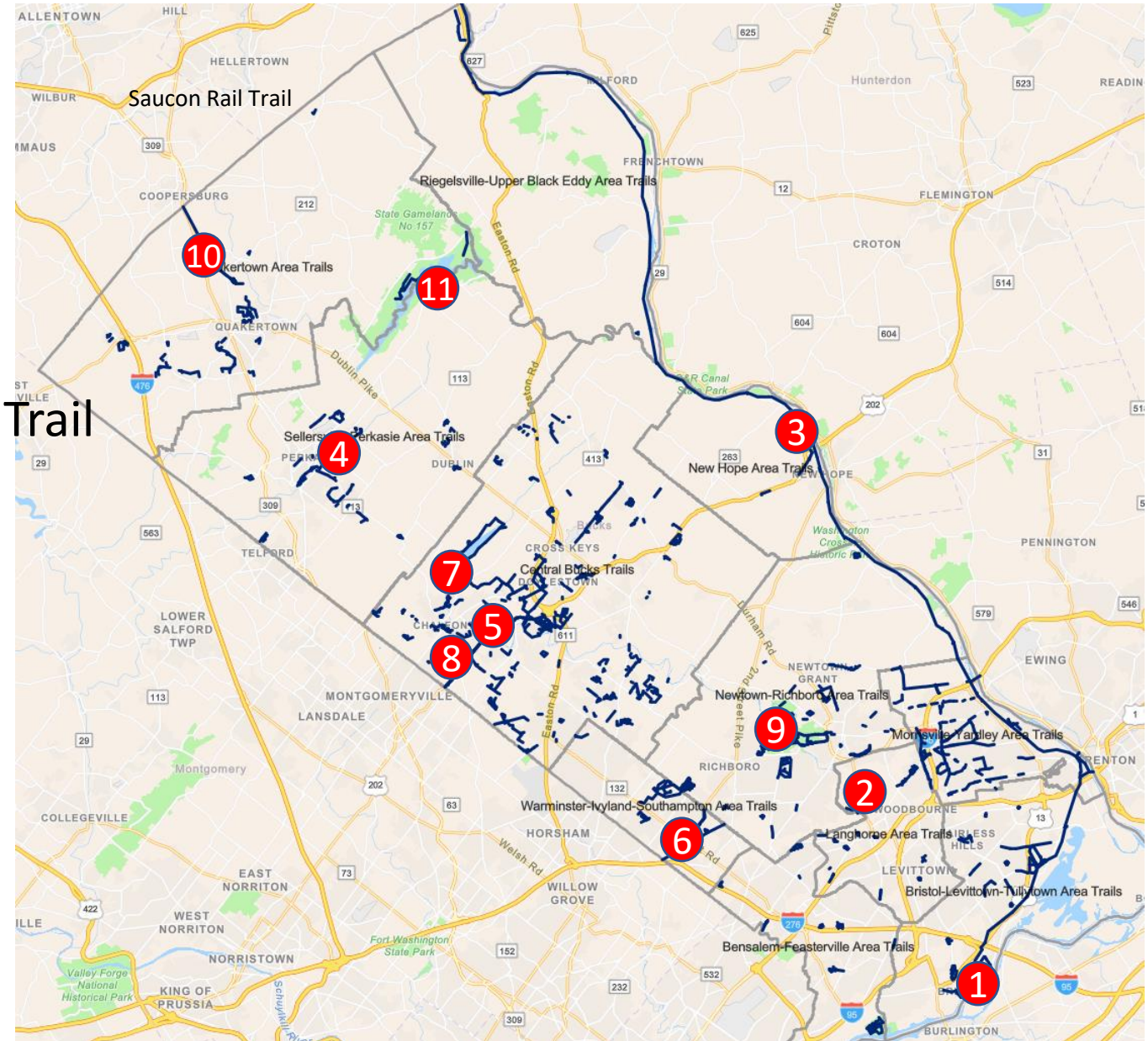
8 Route 202 Parkway Trail

- **Length:** 8.4 miles
- **Trail end points:**
Route 202 and Route 63/Welsh Road (Montgomeryville) and
Route 202 and Route 611 interchange (Doylestown)
- **Trail surfaces:** Asphalt
- **Parking**
 - The most hassle-free place to park to access the Parkway Trail is [Terrain at DeVal](#) (was the Market at Del Val) when it opens this summer.



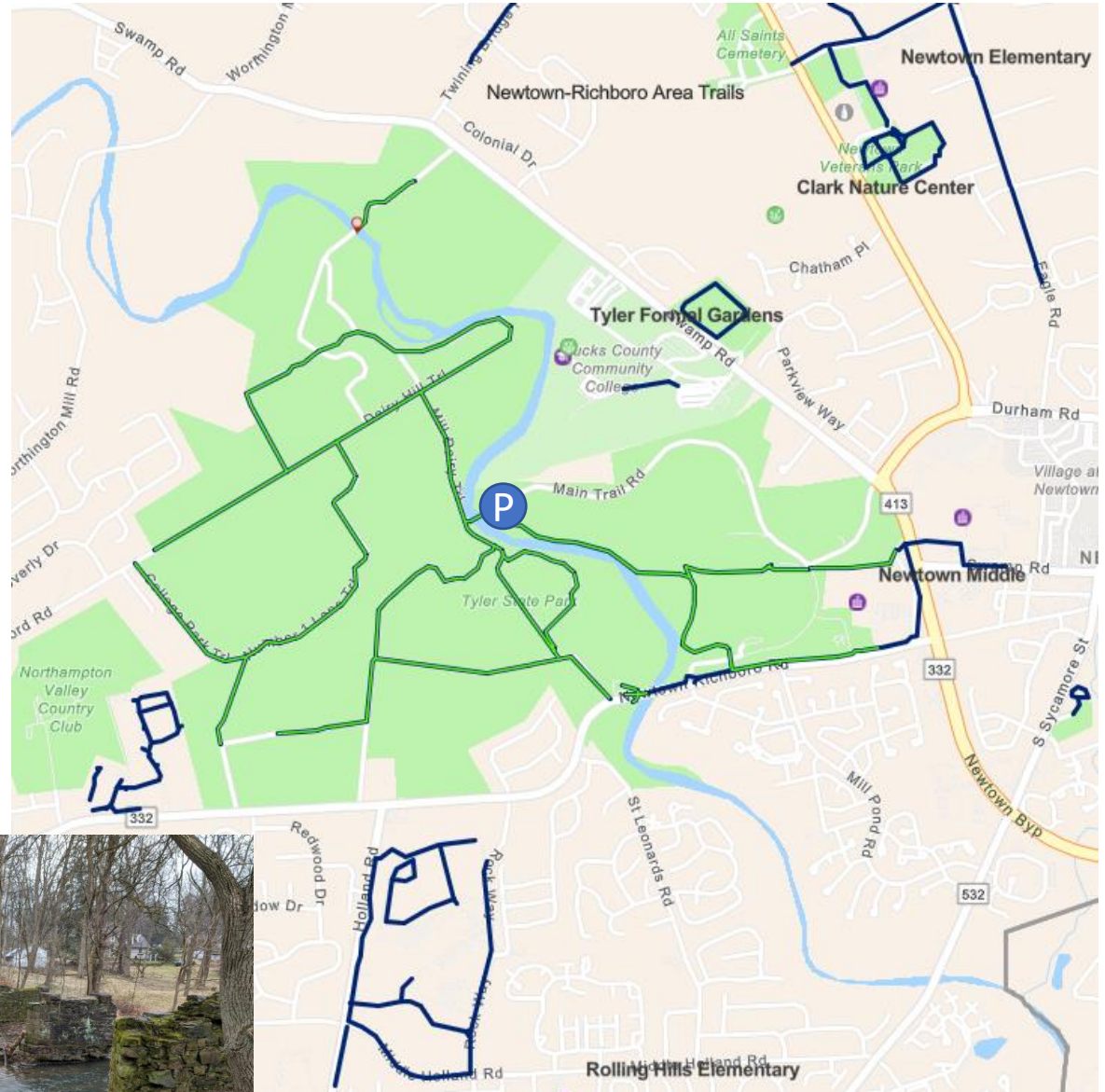
Bucks County Trails

- 1 Bristol Spurline Trail
- 2 Core Creek Park Trail
- 3 Delaware & Lehigh Canal Towpath Trail
- 4 East Branch Perkiomen Creek Trail
- 5 Neshaminy Greenway Trail
- 6 Newtown Rail Trail
- 7 Peace Valley Park Trail
- 8 Route 202 Parkway Trail
- 9 Tyler State Park Bike Trails
- 10 Upper Bucks Rail Trail
- 11 Nockamixon State Park



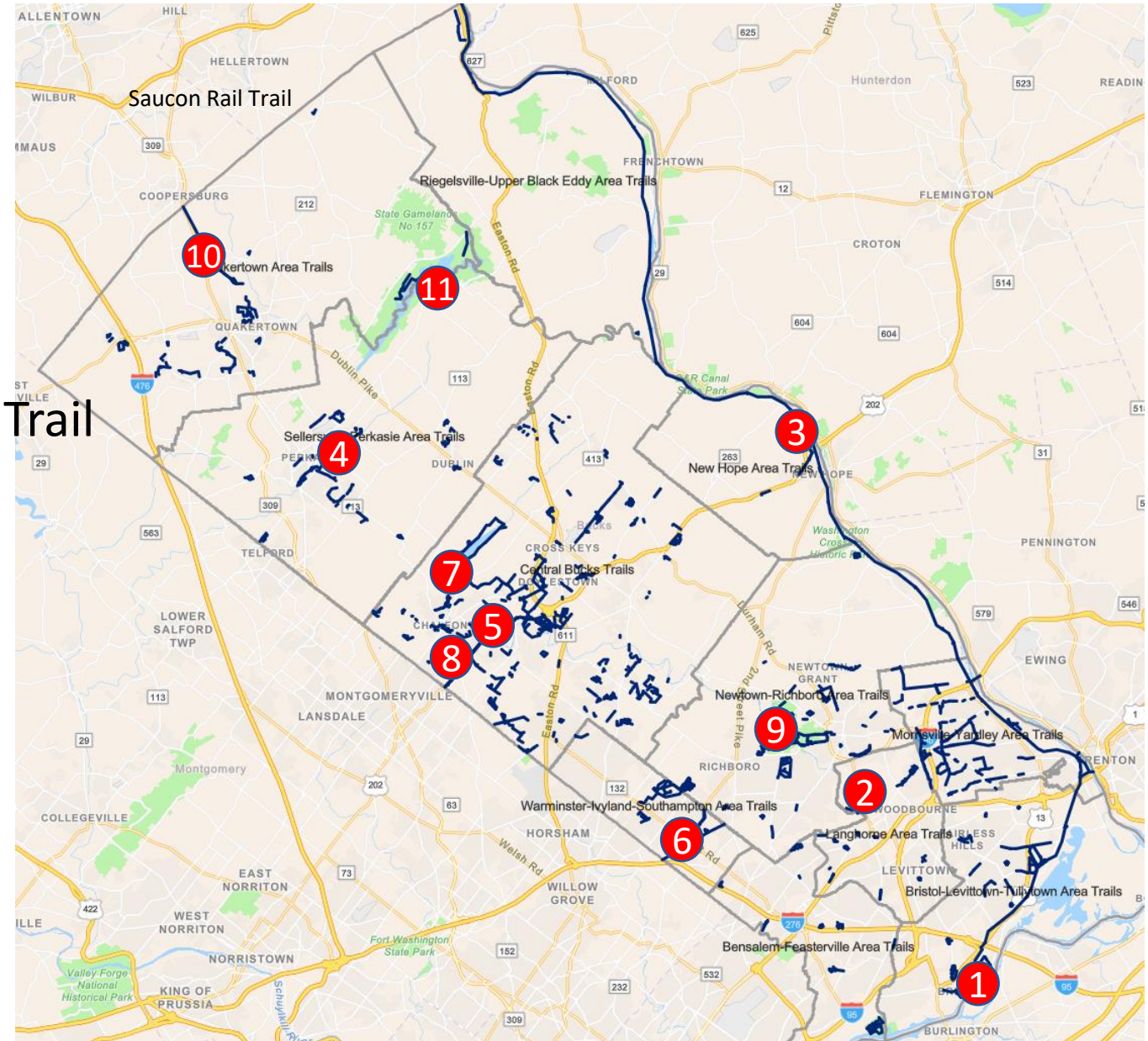
9 Tyler State Park Trails

- **Length:** 10.8 miles
- **Trail end points:** Tyler State Park and Tyler State Park
- **Trail surfaces:** Asphalt, Gravel
- Tyler State Park, located in Newtown, Pennsylvania, covers over 1,700 acres on the grounds of an old farm in a charming woodland setting. The park features a network of interconnected trails, including more than 10.5 miles of paved trails open to cyclists, walkers and in-line skaters and 4 miles of hiking trails.
- I like to park at the end of Main Trail Rd to access the trails



Bucks County Trails

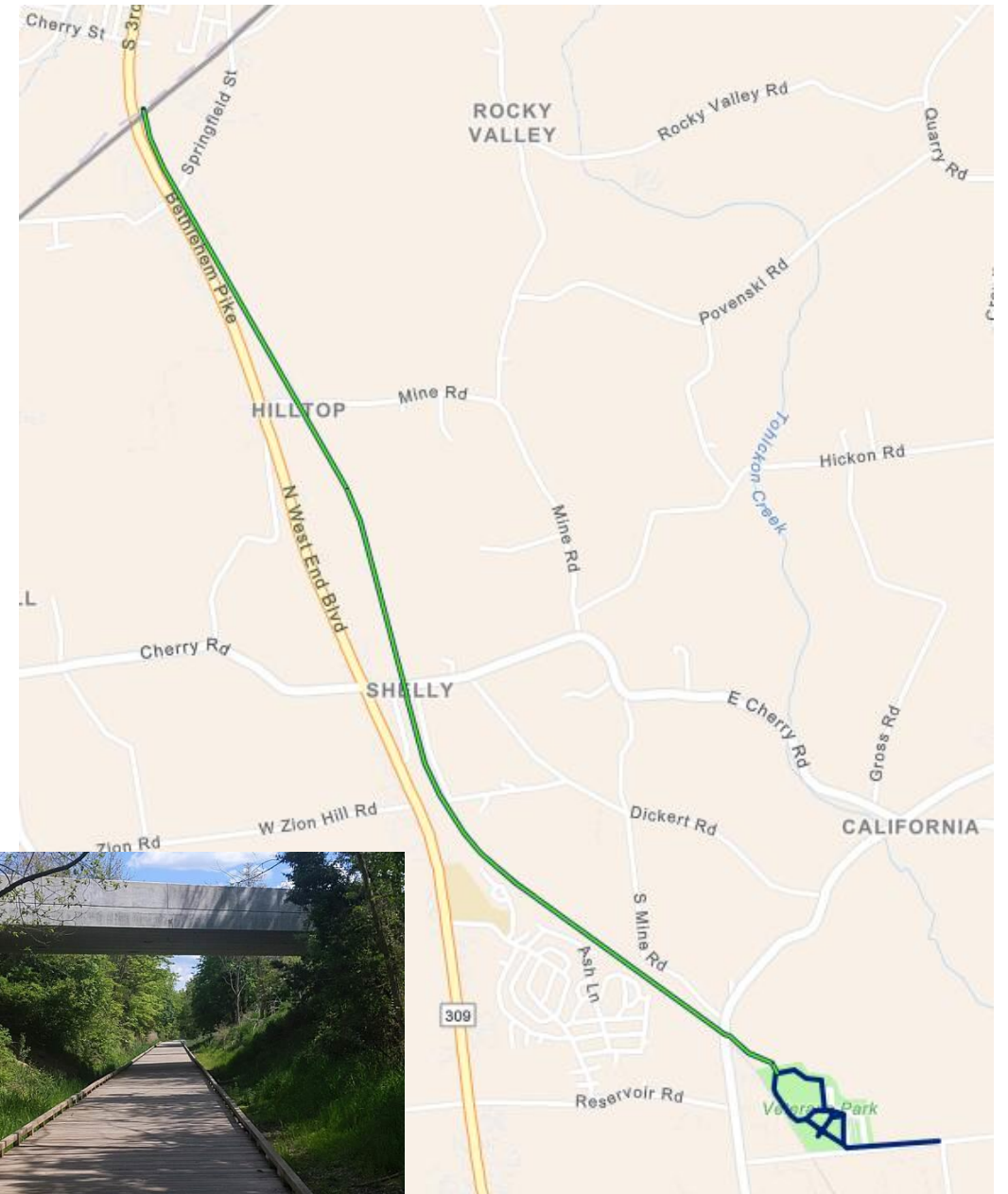
- 1 Bristol Spurline Trail
- 2 Core Creek Park Trail
- 3 Delaware & Lehigh Canal Towpath Trail
- 4 East Branch Perkiomen Creek Trail
- 5 Neshaminy Greenway Trail
- 6 Newtown Rail Trail
- 7 Peace Valley Park Trail
- 8 Route 202 Parkway Trail
- 9 Tyler State Park Bike Trails
- 10 Upper Bucks Rail Trail
- 11 Nockamixon State Park



10

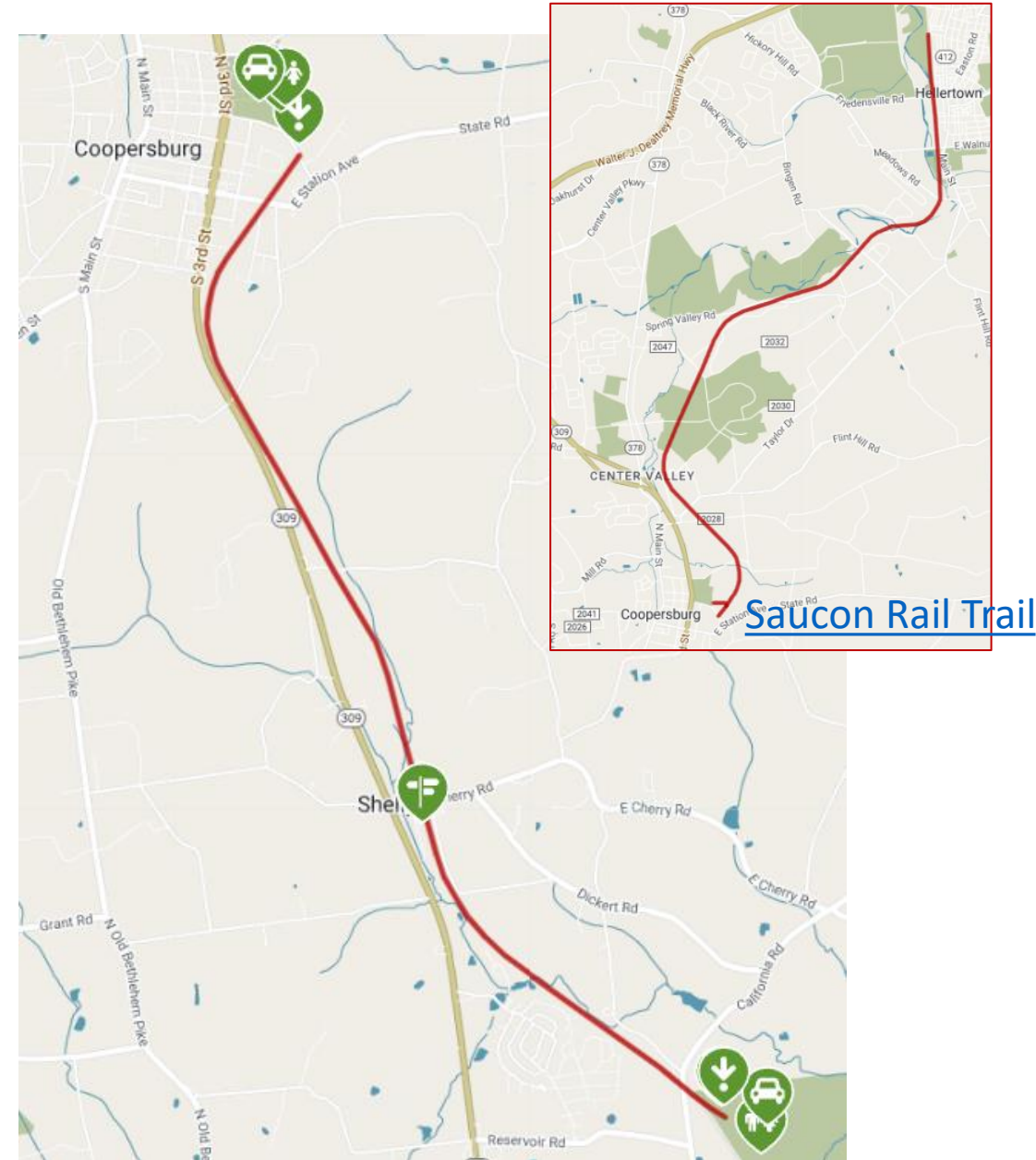
Upper Bucks Rail Trail

- **Length:** 3.2 miles
- **Trail end points:** Saucon Rail Trail (Coopersburg) and Veterans Park (Richland Twp)
- **Trail surfaces:** Boardwalk, Crushed Stone
- The Upper Bucks Rail Trail opened in November of 2020, the culmination of more than a decade of work to turn the vision into a reality. The trail occupies the former Bethlehem branch of the SEPTA-owned line. Surfaced with a crushed stone aggregate.



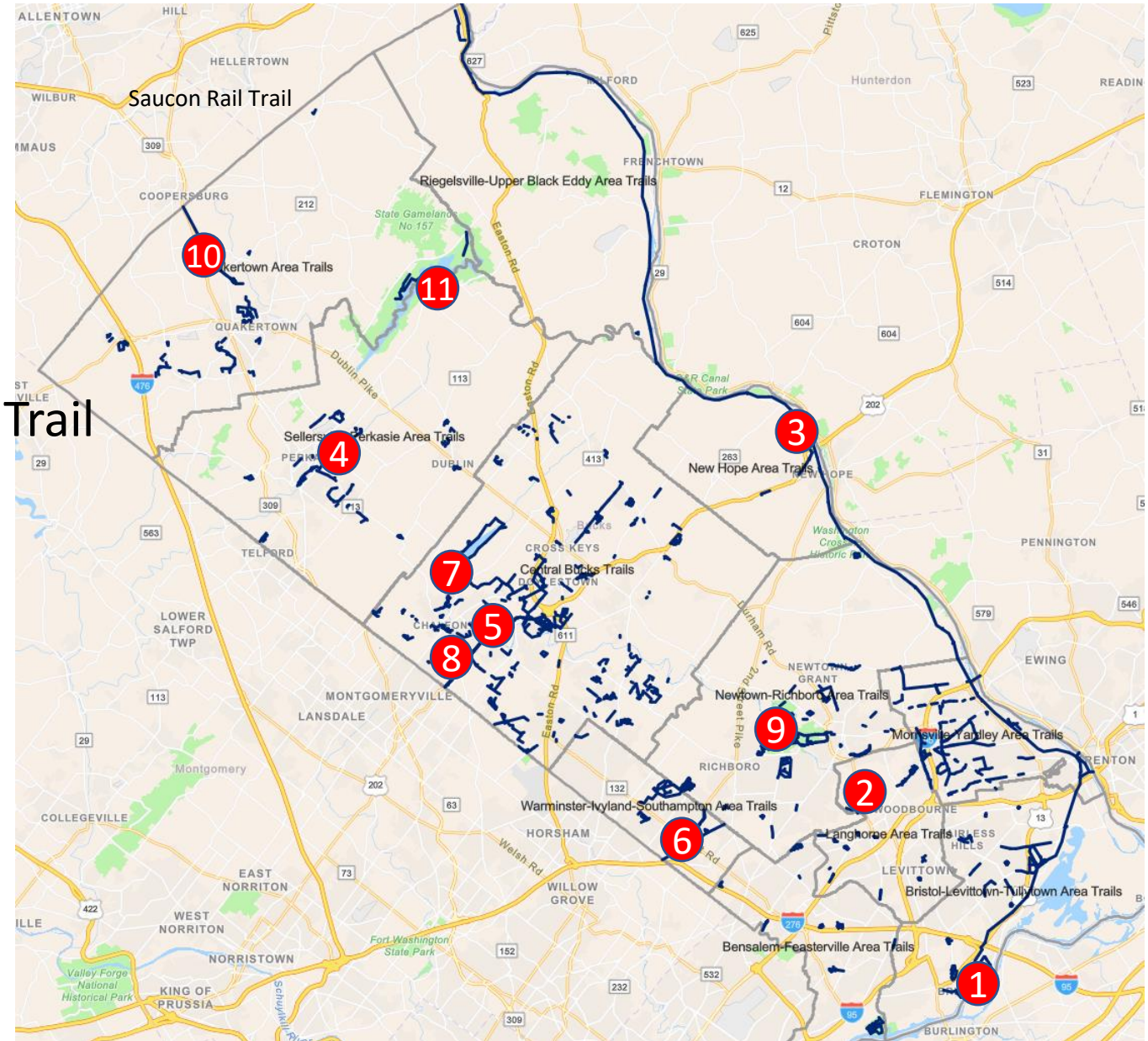
Upper Bucks Rail Trail

- The Upper Bucks Rail Trail currently stretches from Veterans Park in Richland Township, Bucks County, and follows the old railroad right-of-way north to Coopersburg in neighboring Lehigh County, where it links up with the [Saucon Rail Trail](#). A southern extension of two miles into Quakertown is planned, where it will connect to the developing [Liberty Bell Trail](#).
- The Upper Bucks Rail Trail is a part of the Circuit Trails network, a growing trail system across Greater Philadelphia with a goal of 800 miles of connected trails. It is also a part of the Highland Trail, which will stretch across 13 counties in Pennsylvania's Highland country.
- **Parking and Trail Access**
 - There are two trailheads within Richland Township. One is Veteran's Park, at the current south endpoint of the trail (145 E Pumping Station Rd, Quakertown, PA). The other is located on 64 Shelly Road across from the Fire and Rescue station.



Bucks County Trails

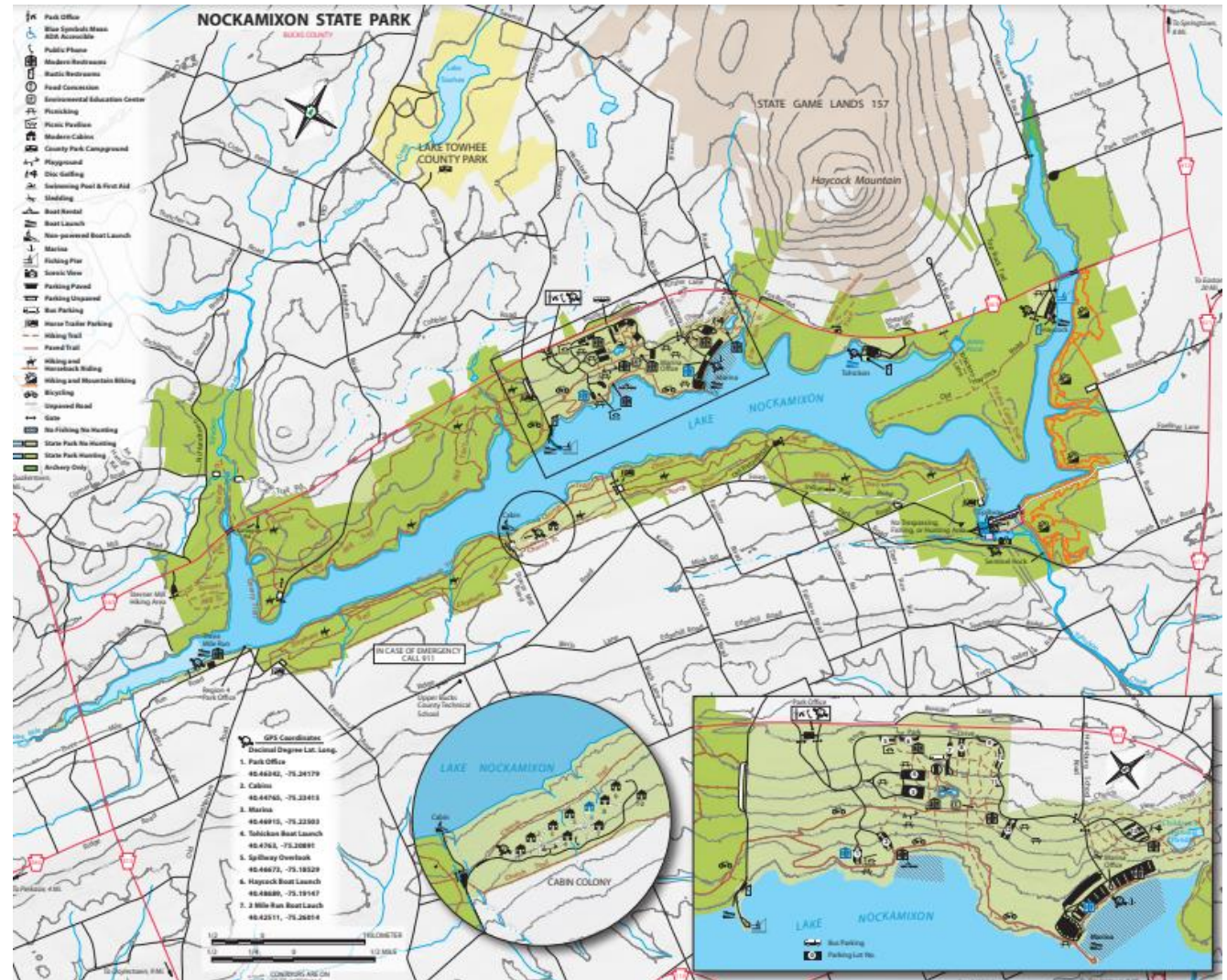
- 1 Bristol Spurline Trail
- 2 Core Creek Park Trail
- 3 Delaware & Lehigh Canal Towpath Trail
- 4 East Branch Perkiomen Creek Trail
- 5 Neshaminy Greenway Trail
- 6 Newtown Rail Trail
- 7 Peace Valley Park Trail
- 8 Route 202 Parkway Trail
- 9 Tyler State Park Bike Trails
- 10 Upper Bucks Rail Trail
- 11 Nockamixon State Park



Nockamixon State Park

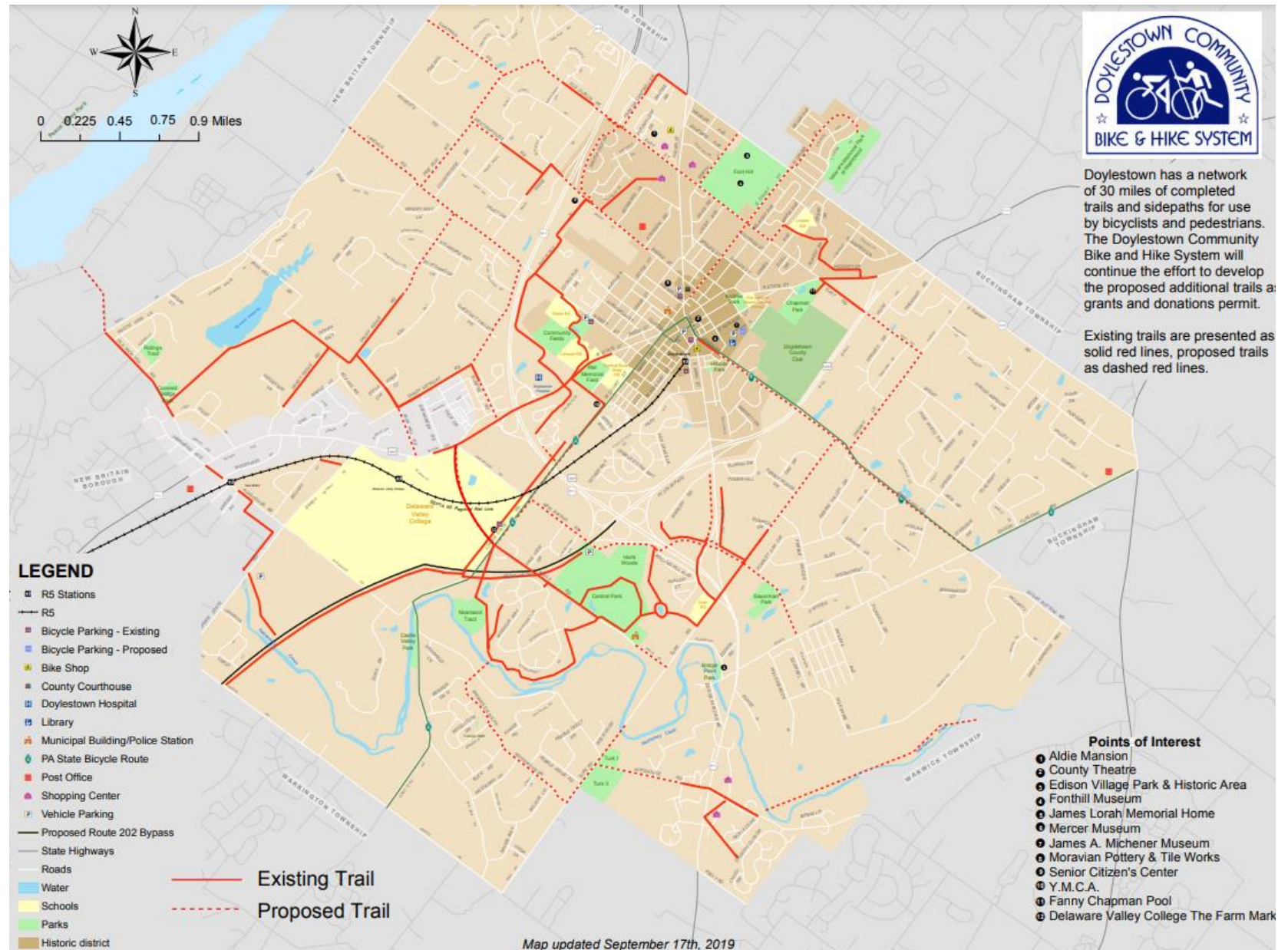
2-mile paved path, 10-mile mountain bike trail

- A paved bike path begins at the Lake Nockamixon marina, but it's not a loop, so save some energy for the return trip! A more adventurous 10-mile trail system for mountain bikes winds around the east side of Haycock Cove. The trail heads can be found off Tower and South Park roads and PA 563. The park also has camping, swimming, hiking, picnicking, fishing, wildlife watching, horseback riding, and hunting.



The Doylestown Bike & Hike System

(updated Sept. 2019)

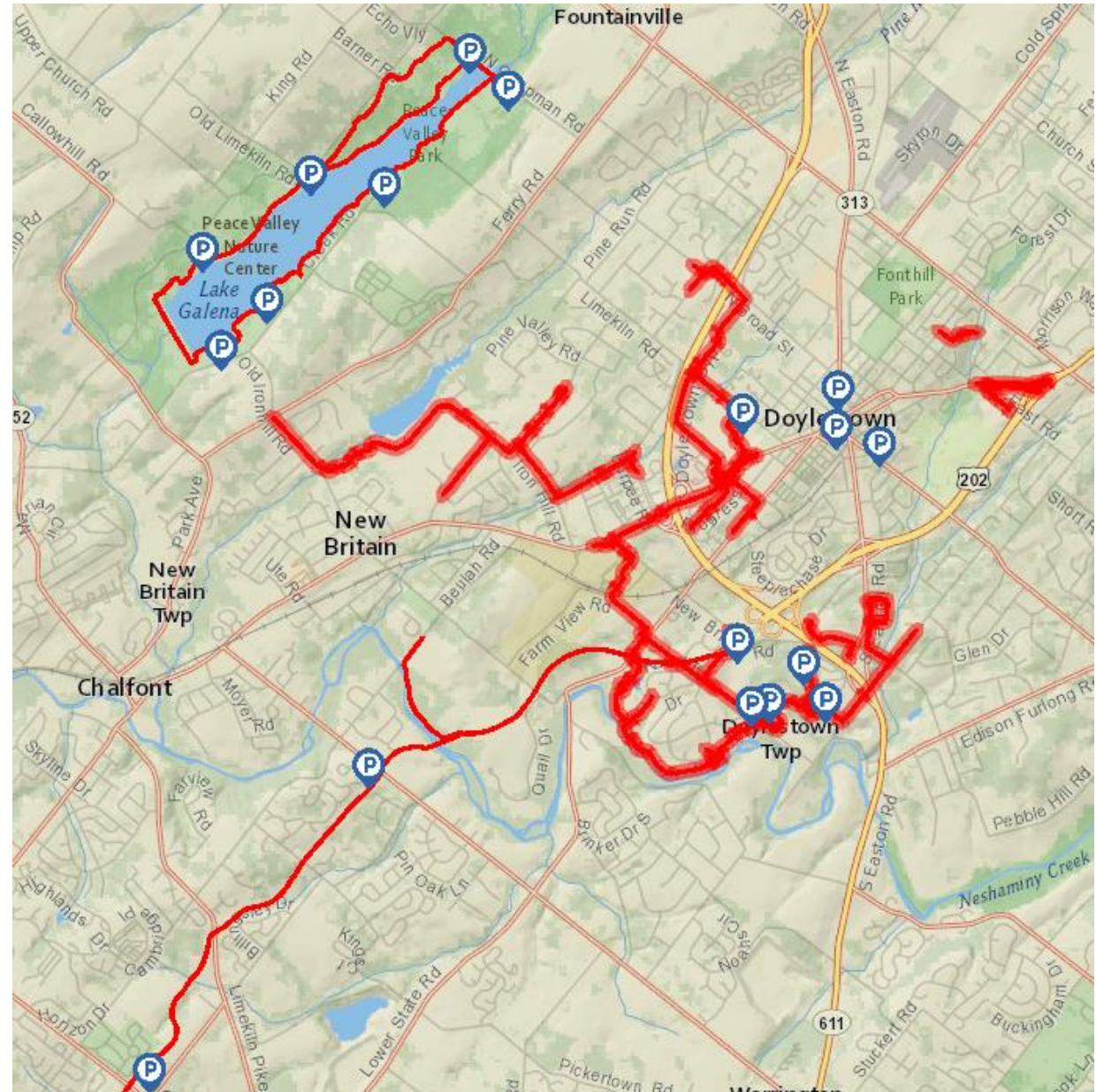


Doylestown has a network of 30 miles of completed trails and sidepaths for use by bicyclists and pedestrians. The Doylestown Community Bike and Hike System will continue the effort to develop the proposed additional trails as grants and donations permit.

Existing trails are presented as solid red lines, proposed trails as dashed red lines.

Local Trails

- The [Doylestown Bike and Hike Trails system](#) provides a convenient car-free network of paved pathways to get around this eastern Pennsylvania community, about 30 miles north of Philadelphia. With more than a dozen miles of trail, residents and visitors can connect to parks, schools, shopping areas, and local attractions.



Doylestown Central Park

8.5 miles

425 Wells Road, Doylestown, PA

- The park is the end point of the US 202 Parkway Trail that extends to Welsh Road in Montgomeryville with additional connections to the Doylestown Hike and Bike System. The paved path can be accessed at the parking lot at the New Britain Road entrance to the park.

